

# TEST REPORT

**Applicant:** Shenzhen Huafurui Technology Co., Ltd.  
**Address:** Unit 1401 & 1402, 14/F, Jinqi Zhigu Mansion (No. 4 Building of Chongwen Garden), Crossing of the Liuxian Street and Tangling Road, Taoyuan Street, Nanshan District, Shenzhen, P.R. China

**The following sample(s) was/were submitted and identified on behalf of the client as:**

Product name: Smartphone  
Model: X50  
Trade mark: CUBOT  
Manufacturer: Shenzhen Huafurui Technology Co., Ltd.  
Address: Unit 1401 & 1402, 14/F, Jinqi Zhigu Mansion (No. 4 Building of Chongwen Garden), Crossing of the Liuxian Street and Tangling Road, Taoyuan Street, Nanshan District, Shenzhen, P.R. China

Sample Received Date: Mar. 20, 2021  
Testing Period: Mar. 20, 2021~ Apr. 16, 2021

**Test Requirement:**

As specified by client, to determine the Lead(Pb), Cadmium(Cd), Mercury(Hg), Hexavalent Chromium(Cr(VI)), Polybrominated Biphenyls(PBBs), Polybrominated, Diphenyl Ethers(PBDEs), Bis-(2-ethylhexyl) Phthalate (DEHP), Benzyl butyl Phthalate (BBP), Dibutyl Phthalate (DBP) and Diisobutyl Phthalate(DIBP) contents in the submitted sample in accordance with RoHS directive 2011/65/EU and the amendment directive (EU) 2015/863.

**Conclusion:**

Pass

**Test Result(s):** Please refer to the following page(s);

**Test Method:** Please refer to the following page(s);

Compiled by: Eason

Reviewed by: Lqzls

Approved by: Mark Liao

Date: 2021-04-20

**Test Result(s):**

## 1.Shell

Part No.	Part Description	Test Items	XRF Screening Result(mg/kg)	Chemical Test Result(mg/kg)	Conclusion
1	Black glass	Pb	BL	/	Pass
		Cd	BL	/	
		Hg	BL	/	
		Cr(Cr(VI))	BL	/	
		Br(PBBs&PBDEs)	BL	/	
		DIBP	/	N.D.	
		DEHP	/	N.D.	
		BBP	/	N.D.	
		DBP	/	N.D.	
2	White label	Pb	BL	/	Pass
		Cd	BL	/	
		Hg	BL	/	
		Cr(Cr(VI))	BL	/	
		Br(PBBs&PBDEs)	BL	/	
		DIBP	/	N.D.	
		DEHP	/	N.D.	
		BBP	/	N.D.	
		DBP	/	N.D.	
3	Transparent plastic	Pb	BL	/	Pass
		Cd	BL	/	
		Hg	BL	/	
		Cr(Cr(VI))	BL	/	
		Br(PBBs&PBDEs)	BL	/	
		DIBP	/	N.D.	
		DEHP	/	N.D.	
		BBP	/	N.D.	
		DBP	/	N.D.	

4	Black metal	Pb	BL	/	Pass
		Cd	BL	/	
		Hg	BL	/	
		Cr(Cr(VI))	IN	N.D.	
		Br(PBBs&PBDEs)	/	/	
		DIBP	/	/	
		DEHP	/	/	
		BBP	/	/	
		DBP	/	/	
5	Black plastic border	Pb	BL	/	Pass
		Cd	BL	/	
		Hg	BL	/	
		Cr(Cr(VI))	BL	/	
		Br(PBBs&PBDEs)	BL	/	
		DIBP	/	N.D.	
		DEHP	/	N.D.	
		BBP	/	N.D.	
		DBP	/	N.D.	
6	Black plastic button	Pb	BL	/	Pass
		Cd	BL	/	
		Hg	BL	/	
		Cr(Cr(VI))	BL	/	
		Br(PBBs&PBDEs)	BL	/	
		DIBP	/	N.D.	
		DEHP	/	N.D.	
		BBP	/	N.D.	
		DBP	/	N.D.	
7	Black FPC	Pb	BL	/	Pass
		Cd	BL	/	
		Hg	BL	/	
		Cr(Cr(VI))	BL	/	
		Br(PBBs&PBDEs)	BL	/	
		DIBP	/	N.D.	
		DEHP	/	N.D.	
		BBP	/	N.D.	
		DBP	/	N.D.	

8	Silver gray metal plate	Pb	IN	381	Pass
		Cd	BL	/	
		Hg	BL	/	
		Cr(Cr(VI))	IN	N.D.	
		Br(PBBs&PBDEs)	/	/	
		DIBP	/	/	
		DEHP	/	/	
		BBP	/	/	
9	Black plastic	Pb	BL	/	Pass
		Cd	BL	/	
		Hg	BL	/	
		Cr(Cr(VI))	BL	/	
		Br(PBBs&PBDEs)	BL	/	
		DIBP	/	N.D.	
		DEHP	/	N.D.	
		BBP	/	N.D.	
10	Copper nut	Pb	OL	19410 <sup>#1</sup>	Pass
		Cd	IN	15	
		Hg	BL	/	
		Cr(Cr(VI))	BL	/	
		Br(PBBs&PBDEs)	/	/	
		DIBP	/	/	
		DEHP	/	/	
		BBP	/	/	
11	Black double-Sided adhesive	Pb	BL	/	Pass
		Cd	BL	/	
		Hg	BL	/	
		Cr(Cr(VI))	BL	/	
		Br(PBBs&PBDEs)	BL	/	
		DIBP	/	N.D.	
		DEHP	/	N.D.	
		BBP	/	N.D.	
DBP	/	N.D.			

12	Black foam	Pb	BL	/	Pass
		Cd	BL	/	
		Hg	BL	/	
		Cr(Cr(VI))	BL	/	
		Br(PBBs&PBDEs)	BL	/	
		DIBP	/	N.D.	
		DEHP	/	N.D.	
		BBP	/	N.D.	
		DBP	/	N.D.	
13	Ferrous metal mesh	Pb	BL	/	Pass
		Cd	BL	/	
		Hg	BL	/	
		Cr(Cr(VI))	IN	N.D.	
		Br(PBBs&PBDEs)	/	/	
		DIBP	/	/	
		DEHP	/	/	
		BBP	/	/	
		DBP	/	/	
14	Black rubber	Pb	BL	/	Pass
		Cd	BL	/	
		Hg	BL	/	
		Cr(Cr(VI))	BL	/	
		Br(PBBs&PBDEs)	BL	/	
		DIBP	/	N.D.	
		DEHP	/	N.D.	
		BBP	/	N.D.	
		DBP	/	N.D.	
15	FPC	Pb	BL	/	Pass
		Cd	BL	/	
		Hg	BL	/	
		Cr(Cr(VI))	BL	/	
		Br(PBBs&PBDEs)	BL	/	
		DIBP	/	N.D.	
		DEHP	/	N.D.	
		BBP	/	N.D.	
		DBP	/	N.D.	

16	Metal shrapnel	Pb	BL	/	Pass
		Cd	BL	/	
		Hg	BL	/	
		Cr(Cr(VI))	IN	N.D.	
		Br(PBBs&PBDEs)	/	/	
		DIBP	/	/	
		DEHP	/	/	
		BBP	/	/	
		DBP	/	/	
17	Black tape	Pb	BL	/	Pass
		Cd	BL	/	
		Hg	BL	/	
		Cr(Cr(VI))	BL	/	
		Br(PBBs&PBDEs)	BL	/	
		DIBP	/	N.D.	
		DEHP	/	N.D.	
		BBP	/	N.D.	
		DBP	/	N.D.	
18	Silvery metallic film	Pb	BL	/	Pass
		Cd	BL	/	
		Hg	BL	/	
		Cr(Cr(VI))	IN	N.D.	
		Br(PBBs&PBDEs)	/	/	
		DIBP	/	/	
		DEHP	/	/	
		BBP	/	/	
		DBP	/	/	
19	Fingerprint buttons	Pb	BL	/	Pass
		Cd	BL	/	
		Hg	BL	/	
		Cr(Cr(VI))	BL	/	
		Br(PBBs&PBDEs)	BL	/	
		DIBP	/	N.D.	
		DEHP	/	N.D.	
		BBP	/	N.D.	
		DBP	/	N.D.	



20	Metal back plate	Pb	BL	/	Pass
		Cd	BL	/	
		Hg	BL	/	
		Cr(Cr(VI))	IN	N.D.	
		Br(PBBs&PBDEs)	/	/	
		DIBP	/	/	
		DEHP	/	/	
		BBP	/	/	
		DBP	/	/	
21	Black metal screw	Pb	BL	/	Pass
		Cd	BL	/	
		Hg	BL	/	
		Cr(Cr(VI))	IN	N.D.	
		Br(PBBs&PBDEs)	/	/	
		DIBP	/	/	
		DEHP	/	/	
		BBP	/	/	
		DBP	/	/	
22	Silvery metal screw	Pb	BL	/	Pass
		Cd	BL	/	
		Hg	BL	/	
		Cr(Cr(VI))	BL	/	
		Br(PBBs&PBDEs)	/	/	
		DIBP	/	/	
		DEHP	/	/	
		BBP	/	/	
		DBP	/	/	

## 2.Screen

23	Glass screen	Pb	BL	/	Pass
		Cd	BL	/	
		Hg	BL	/	
		Cr(Cr(VI))	BL	/	
		Br(PBBs&PBDEs)	BL	/	
		DIBP	/	N.D.	
		DEHP	/	N.D.	
		BBP	/	N.D.	
		DBP	/	N.D.	

24	Silvery metal plate	Pb	BL	/	Pass
		Cd	BL	/	
		Hg	BL	/	
		Cr(Cr(VI))	IN	N.D.	
		Br(PBBs&PBDEs)	/	/	
		DIBP	/	/	
		DEHP	/	/	
		BBP	/	/	
25	White plastic frame	Pb	BL	/	Pass
		Cd	BL	/	
		Hg	BL	/	
		Cr(Cr(VI))	BL	/	
		Br(PBBs&PBDEs)	BL	/	
		DIBP	/	N.D.	
		DEHP	/	N.D.	
		BBP	/	N.D.	
26	White plastic sheet	Pb	BL	/	Pass
		Cd	BL	/	
		Hg	BL	/	
		Cr(Cr(VI))	BL	/	
		Br(PBBs&PBDEs)	BL	/	
		DIBP	/	N.D.	
		DEHP	/	N.D.	
		BBP	/	N.D.	
27	Transparent plastic board	Pb	BL	/	Pass
		Cd	BL	/	
		Hg	BL	/	
		Cr(Cr(VI))	BL	/	
		Br(PBBs&PBDEs)	BL	/	
		DIBP	/	N.D.	
		DEHP	/	N.D.	
		BBP	/	N.D.	
DBP	/	N.D.			



28	Frosted white plastic	Pb	BL	/	Pass
		Cd	BL	/	
		Hg	BL	/	
		Cr(Cr(VI))	BL	/	
		Br(PBBs&PBDEs)	BL	/	
		DIBP	/	N.D.	
		DEHP	/	N.D.	
		BBP	/	N.D.	
		DBP	/	N.D.	
29	Silvery plastic sheet	Pb	BL	/	Pass
		Cd	BL	/	
		Hg	BL	/	
		Cr(Cr(VI))	BL	/	
		Br(PBBs&PBDEs)	BL	/	
		DIBP	/	N.D.	
		DEHP	/	N.D.	
		BBP	/	N.D.	
		DBP	/	N.D.	
30	Black foam	Pb	BL	/	Pass
		Cd	BL	/	
		Hg	BL	/	
		Cr(Cr(VI))	BL	/	
		Br(PBBs&PBDEs)	BL	/	
		DIBP	/	N.D.	
		DEHP	/	N.D.	
		BBP	/	N.D.	
		DBP	/	N.D.	
31	LED	Pb	BL	/	Pass
		Cd	BL	/	
		Hg	BL	/	
		Cr(Cr(VI))	BL	/	
		Br(PBBs&PBDEs)	BL	/	
		DIBP	/	N.D.	
		DEHP	/	N.D.	
		BBP	/	N.D.	
		DBP	/	N.D.	

32	FPC	Pb	BL	/	Pass
		Cd	BL	/	
		Hg	BL	/	
		Cr(Cr(VI))	BL	/	
		Br(PBBs&PBDEs)	BL	/	
		DIBP	/	N.D.	
		DEHP	/	N.D.	
		BBP	/	N.D.	
33	Yellow adhesive tape	DBP	/	N.D.	Pass
		Pb	BL	/	
		Cd	BL	/	
		Hg	BL	/	
		Cr(Cr(VI))	IN	N.D.	
		Br(PBBs&PBDEs)	IN	N.D.	
		DIBP	/	N.D.	
		DEHP	/	N.D.	
34	Silvery grey foam	BBP	/	N.D.	Pass
		DBP	/	N.D.	
		Pb	BL	/	
		Cd	BL	/	
		Hg	BL	/	
		Cr(Cr(VI))	BL	/	
		Br(PBBs&PBDEs)	BL	/	
		DIBP	/	N.D.	
35	White PCB	DEHP	/	N.D.	Pass
		BBP	/	N.D.	
		DBP	/	N.D.	
		Pb	BL	/	
		Cd	BL	/	
		Hg	BL	/	
		Cr(Cr(VI))	BL	/	
		Br(PBBs&PBDEs)	BL	/	

36	Black double-Sided adhesive	Pb	BL	/	Pass
		Cd	BL	/	
		Hg	BL	/	
		Cr(Cr(VI))	BL	/	
		Br(PBBs&PBDEs)	BL	/	
		DIBP	/	N.D.	
		DEHP	/	N.D.	
		BBP	/	N.D.	
		DBP	/	N.D.	
37	SMD capacitor	Pb	BL	/	Pass
		Cd	BL	/	
		Hg	BL	/	
		Cr(Cr(VI))	BL	/	
		Br(PBBs&PBDEs)	BL	/	
		DIBP	/	N.D.	
		DEHP	/	N.D.	
		BBP	/	N.D.	
		DBP	/	N.D.	
38	SMD resistor	Pb	BL	/	Pass
		Cd	BL	/	
		Hg	BL	/	
		Cr(Cr(VI))	IN	N.D.	
		Br(PBBs&PBDEs)	BL	/	
		DIBP	/	N.D.	
		DEHP	/	N.D.	
		BBP	/	N.D.	
		DBP	/	N.D.	
39	IC	Pb	BL	/	Pass
		Cd	BL	/	
		Hg	BL	/	
		Cr(Cr(VI))	BL	/	
		Br(PBBs&PBDEs)	BL	/	
		DIBP	/	N.D.	
		DEHP	/	N.D.	
		BBP	/	N.D.	
		DBP	/	N.D.	

40	Black plastic of black interface	Pb	BL	/	Pass
		Cd	BL	/	
		Hg	BL	/	
		Cr(Cr(VI))	BL	/	
		Br(PBBs&PBDEs)	BL	/	
		DIBP	/	N.D.	
		DEHP	/	N.D.	
		BBP	/	N.D.	
		DBP	/	N.D.	
41	Metal contact of black interface	Pb	BL	/	Pass
		Cd	BL	/	
		Hg	BL	/	
		Cr(Cr(VI))	BL	/	
		Br(PBBs&PBDEs)	/	/	
		DIBP	/	/	
		DEHP	/	/	
		BBP	/	/	
		DBP	/	/	
42	Silver grey tape	Pb	BL	/	Pass
		Cd	BL	/	
		Hg	BL	/	
		Cr(Cr(VI))	BL	/	
		Br(PBBs&PBDEs)	BL	/	
		DIBP	/	N.D.	
		DEHP	/	N.D.	
		BBP	/	N.D.	
		DBP	/	N.D.	
43	Metal back plate	Pb	BL	/	Pass
		Cd	BL	/	
		Hg	BL	/	
		Cr(Cr(VI))	IN	N.D.	
		Br(PBBs&PBDEs)	/	/	
		DIBP	/	/	
		DEHP	/	/	
		BBP	/	/	
		DBP	/	/	

44	Black tape	Pb	BL	/	Pass
		Cd	BL	/	
		Hg	BL	/	
		Cr(Cr(VI))	BL	/	
		Br(PBBs&PBDEs)	BL	/	
		DIBP	/	N.D.	
		DEHP	/	N.D.	
		DBP	/	N.D.	

## 3. Big horn

45	Silvery metal shell	Pb	BL	/	Pass
		Cd	BL	/	
		Hg	BL	/	
		Cr(Cr(VI))	BL	/	
		Br(PBBs&PBDEs)	/	/	
		DIBP	/	/	
		DEHP	/	/	
		DBP	/	/	
46	Black plastic shell	Pb	BL	/	Pass
		Cd	BL	/	
		Hg	BL	/	
		Cr(Cr(VI))	BL	/	
		Br(PBBs&PBDEs)	/	/	
		DIBP	/	/	
		DEHP	/	/	
		DBP	/	/	
47	Magnet	Pb	BL	/	Pass
		Cd	BL	/	
		Hg	BL	/	
		Cr(Cr(VI))	BL	/	
		Br(PBBs&PBDEs)	/	/	
		DIBP	/	/	
		DEHP	/	/	
		DBP	/	/	

48	Coil	Pb	BL	/	Pass
		Cd	BL	/	
		Hg	BL	/	
		Cr(Cr(VI))	BL	/	
		Br(PBBs&PBDEs)	/	/	
		DIBP	/	/	
		DEHP	/	/	
		BBP	/	/	
		DBP	/	/	
49	Sound basin	Pb	BL	/	Pass
		Cd	BL	/	
		Hg	BL	/	
		Cr(Cr(VI))	BL	/	
		Br(PBBs&PBDEs)	/	/	
		DIBP	/	/	
		DEHP	/	/	
		BBP	/	/	
		DBP	/	/	
50	Transparent plastic	Pb	BL	/	Pass
		Cd	BL	/	
		Hg	BL	/	
		Cr(Cr(VI))	BL	/	
		Br(PBBs&PBDEs)	BL	/	
		DIBP	/	N.D.	
		DEHP	/	N.D.	
		BBP	/	N.D.	
		DBP	/	N.D.	
51	Black foam	Pb	BL	/	Pass
		Cd	BL	/	
		Hg	BL	/	
		Cr(Cr(VI))	BL	/	
		Br(PBBs&PBDEs)	BL	/	
		DIBP	/	N.D.	
		DEHP	/	N.D.	
		BBP	/	N.D.	
		DBP	/	N.D.	

## 4.Small horn

52	Silvery metal shell	Pb	BL	/	Pass
		Cd	BL	/	
		Hg	BL	/	
		Cr(Cr(VI))	BL	/	
		Br(PBBs&PBDEs)	/	/	
		DIBP	/	/	
		DEHP	/	/	
		BBP	/	/	
53	Black plastic shell	Pb	BL	/	Pass
		Cd	BL	/	
		Hg	BL	/	
		Cr(Cr(VI))	BL	/	
		Br(PBBs&PBDEs)	BL	/	
		DIBP	/	N.D.	
		DEHP	/	N.D.	
		BBP	/	N.D.	
54	Magnet	Pb	BL	/	Pass
		Cd	BL	/	
		Hg	BL	/	
		Cr(Cr(VI))	BL	/	
		Br(PBBs&PBDEs)	/	/	
		DIBP	/	/	
		DEHP	/	/	
		BBP	/	/	
55	Coil	Pb	BL	/	Pass
		Cd	BL	/	
		Hg	BL	/	
		Cr(Cr(VI))	BL	/	
		Br(PBBs&PBDEs)	/	/	
		DIBP	/	/	
		DEHP	/	/	
		BBP	/	/	
DBP	/	/			



56	Sound basin	Pb	BL	/	Pass
		Cd	BL	/	
		Hg	BL	/	
		Cr(Cr(VI))	BL	/	
		Br(PBBs&PBDEs)	BL	/	
		DIBP	/	N.D.	
		DEHP	/	N.D.	
		BBP	/	N.D.	
		DBP	/	N.D.	
57	Transparent plastic	Pb	BL	/	Pass
		Cd	BL	/	
		Hg	BL	/	
		Cr(Cr(VI))	BL	/	
		Br(PBBs&PBDEs)	BL	/	
		DIBP	/	N.D.	
		DEHP	/	N.D.	
		BBP	/	N.D.	
		DBP	/	N.D.	
58	Black fabric net	Pb	BL	/	Pass
		Cd	BL	/	
		Hg	BL	/	
		Cr(Cr(VI))	BL	/	
		Br(PBBs&PBDEs)	BL	/	
		DIBP	/	N.D.	
		DEHP	/	N.D.	
		BBP	/	N.D.	
		DBP	/	N.D.	

## 5. Camera 1

59	Silvery metal shell	Pb	BL	/	Pass
		Cd	BL	/	
		Hg	BL	/	
		Cr(Cr(VI))	BL	/	
		Br(PBBs&PBDEs)	/	/	
		DIBP	/	/	
		DEHP	/	/	
		BBP	/	/	
		DBP	/	/	

60	Magnet	Pb	BL	/	Pass
		Cd	BL	/	
		Hg	BL	/	
		Cr(Cr(VI))	BL	/	
		Br(PBBs&PBDEs)	/	/	
		DIBP	/	/	
		DEHP	/	/	
		BBP	/	/	
		DBP	/	/	
61	Black plastic shell	Pb	BL	/	Pass
		Cd	BL	/	
		Hg	BL	/	
		Cr(Cr(VI))	BL	/	
		Br(PBBs&PBDEs)	BL	/	
		DIBP	/	N.D.	
		DEHP	/	N.D.	
		BBP	/	N.D.	
		DBP	/	N.D.	
62	Lens	Pb	BL	/	Pass
		Cd	BL	/	
		Hg	BL	/	
		Cr(Cr(VI))	BL	/	
		Br(PBBs&PBDEs)	BL	/	
		DIBP	/	N.D.	
		DEHP	/	N.D.	
		BBP	/	N.D.	
		DBP	/	N.D.	
63	Coil	Pb	BL	/	Pass
		Cd	BL	/	
		Hg	BL	/	
		Cr(Cr(VI))	BL	/	
		Br(PBBs&PBDEs)	/	/	
		DIBP	/	/	
		DEHP	/	/	
		BBP	/	/	
		DBP	/	/	

64	Grey plastic sheet	Pb	BL	/	Pass
		Cd	BL	/	
		Hg	BL	/	
		Cr(Cr(VI))	BL	/	
		Br(PBBs&PBDEs)	BL	/	
		DIBP	/	N.D.	
		DEHP	/	N.D.	
		BBP	/	N.D.	
		DBP	/	N.D.	
65	Lens	Pb	BL	/	Pass
		Cd	BL	/	
		Hg	BL	/	
		Cr(Cr(VI))	BL	/	
		Br(PBBs&PBDEs)	BL	/	
		DIBP	/	N.D.	
		DEHP	/	N.D.	
		BBP	/	N.D.	
		DBP	/	N.D.	
66	FPC	Pb	BL	/	Pass
		Cd	BL	/	
		Hg	BL	/	
		Cr(Cr(VI))	BL	/	
		Br(PBBs&PBDEs)	BL	/	
		DIBP	/	N.D.	
		DEHP	/	N.D.	
		BBP	/	N.D.	
		DBP	/	N.D.	
67	COMS photosensitive components	Pb	BL	/	Pass
		Cd	BL	/	
		Hg	BL	/	
		Cr(Cr(VI))	BL	/	
		Br(PBBs&PBDEs)	BL	/	
		DIBP	/	N.D.	
		DEHP	/	N.D.	
		BBP	/	N.D.	
		DBP	/	N.D.	

68	SMD capacitor	Pb	BL	/	Pass
		Cd	BL	/	
		Hg	BL	/	
		Cr(Cr(VI))	BL	/	
		Br(PBBs&PBDEs)	BL	/	
		DIBP	/	N.D.	
		DEHP	/	N.D.	
		BBP	/	N.D.	
		DBP	/	N.D.	
69	SMD resistor	Pb	BL	/	Pass
		Cd	BL	/	
		Hg	BL	/	
		Cr(Cr(VI))	BL	/	
		Br(PBBs&PBDEs)	BL	/	
		DIBP	/	N.D.	
		DEHP	/	N.D.	
		BBP	/	N.D.	
		DBP	/	N.D.	
70	Silver grey tape	Pb	BL	/	Pass
		Cd	BL	/	
		Hg	BL	/	
		Cr(Cr(VI))	BL	/	
		Br(PBBs&PBDEs)	BL	/	
		DIBP	/	N.D.	
		DEHP	/	N.D.	
		BBP	/	N.D.	
		DBP	/	N.D.	
71	Black plastic of black interface	Pb	BL	/	Pass
		Cd	BL	/	
		Hg	BL	/	
		Cr(Cr(VI))	BL	/	
		Br(PBBs&PBDEs)	BL	/	
		DIBP	/	N.D.	
		DEHP	/	N.D.	
		BBP	/	N.D.	
		DBP	/	N.D.	

72	Metal contact of black interface	Pb	BL	/	Pass
		Cd	BL	/	
		Hg	BL	/	
		Cr(Cr(VI))	BL	/	
		Br(PBBs&PBDEs)	/	/	
		DIBP	/	/	
		DEHP	/	/	
		BBP	/	/	
DBP	/	/			

## 6. Camera 2

73	Silvery metal shell	Pb	BL	/	Pass
		Cd	BL	/	
		Hg	BL	/	
		Cr(Cr(VI))	BL	/	
		Br(PBBs&PBDEs)	/	/	
		DIBP	/	/	
		DEHP	/	/	
		BBP	/	/	
DBP	/	/			
74	Magnet	Pb	BL	/	Pass
		Cd	BL	/	
		Hg	BL	/	
		Cr(Cr(VI))	BL	/	
		Br(PBBs&PBDEs)	/	/	
		DIBP	/	/	
		DEHP	/	/	
		BBP	/	/	
DBP	/	/			
75	Black plastic shell	Pb	BL	/	Pass
		Cd	BL	/	
		Hg	BL	/	
		Cr(Cr(VI))	BL	/	
		Br(PBBs&PBDEs)	BL	/	
		DIBP	/	N.D.	
		DEHP	/	N.D.	
		BBP	/	N.D.	
DBP	/	N.D.			

76	Lens	Pb	BL	/	Pass
		Cd	BL	/	
		Hg	BL	/	
		Cr(Cr(VI))	BL	/	
		Br(PBBs&PBDEs)	BL	/	
		DIBP	/	N.D.	
		DEHP	/	N.D.	
		BBP	/	N.D.	
		DBP	/	N.D.	
77	Coil	Pb	BL	/	Pass
		Cd	BL	/	
		Hg	BL	/	
		Cr(Cr(VI))	BL	/	
		Br(PBBs&PBDEs)	/	/	
		DIBP	/	/	
		DEHP	/	/	
		BBP	/	/	
		DBP	/	/	
78	Grey plastic sheet	Pb	BL	/	Pass
		Cd	BL	/	
		Hg	BL	/	
		Cr(Cr(VI))	BL	/	
		Br(PBBs&PBDEs)	BL	/	
		DIBP	/	N.D.	
		DEHP	/	N.D.	
		BBP	/	N.D.	
		DBP	/	N.D.	
79	Lens	Pb	BL	/	Pass
		Cd	BL	/	
		Hg	BL	/	
		Cr(Cr(VI))	BL	/	
		Br(PBBs&PBDEs)	BL	/	
		DIBP	/	N.D.	
		DEHP	/	N.D.	
		BBP	/	N.D.	
		DBP	/	N.D.	

80	FPC	Pb	BL	/	Pass
		Cd	BL	/	
		Hg	BL	/	
		Cr(Cr(VI))	IN	N.D.	
		Br(PBBs&PBDEs)	BL	/	
		DIBP	/	N.D.	
		DEHP	/	N.D.	
		BBP	/	N.D.	
		DBP	/	N.D.	
81	COMS photosensitive components	Pb	BL	/	Pass
		Cd	BL	/	
		Hg	BL	/	
		Cr(Cr(VI))	BL	/	
		Br(PBBs&PBDEs)	BL	/	
		DIBP	/	N.D.	
		DEHP	/	N.D.	
		BBP	/	N.D.	
		DBP	/	N.D.	
82	SMD capacitor	Pb	BL	/	Pass
		Cd	BL	/	
		Hg	BL	/	
		Cr(Cr(VI))	BL	/	
		Br(PBBs&PBDEs)	BL	/	
		DIBP	/	N.D.	
		DEHP	/	N.D.	
		BBP	/	N.D.	
		DBP	/	N.D.	
83	Metal back plate	Pb	BL	/	Pass
		Cd	BL	/	
		Hg	BL	/	
		Cr(Cr(VI))	IN	N.D.	
		Br(PBBs&PBDEs)	/	/	
		DIBP	/	/	
		DEHP	/	/	
		BBP	/	/	
		DBP	/	/	



## 7.Camera 3

84	Black plastic shell	Pb	BL	/	Pass
		Cd	BL	/	
		Hg	BL	/	
		Cr(Cr(VI))	BL	/	
		Br(PBBs&PBDEs)	BL	/	
		DIBP	/	N.D.	
		DEHP	/	N.D.	
		BBP	/	N.D.	
85	Lens	Pb	BL	/	Pass
		Cd	BL	/	
		Hg	BL	/	
		Cr(Cr(VI))	BL	/	
		Br(PBBs&PBDEs)	BL	/	
		DIBP	/	N.D.	
		DEHP	/	N.D.	
		BBP	/	N.D.	
86	Grey plastic sheet	Pb	BL	/	Pass
		Cd	BL	/	
		Hg	BL	/	
		Cr(Cr(VI))	BL	/	
		Br(PBBs&PBDEs)	BL	/	
		DIBP	/	N.D.	
		DEHP	/	N.D.	
		BBP	/	N.D.	
87	Lens	Pb	BL	/	Pass
		Cd	BL	/	
		Hg	BL	/	
		Cr(Cr(VI))	BL	/	
		Br(PBBs&PBDEs)	BL	/	
		DIBP	/	N.D.	
		DEHP	/	N.D.	
		BBP	/	N.D.	
DBP	/	N.D.			

88	FPC	Pb	BL	/	Pass
		Cd	BL	/	
		Hg	BL	/	
		Cr(Cr(VI))	BL	/	
		Br(PBBs&PBDEs)	BL	/	
		DIBP	/	N.D.	
		DEHP	/	N.D.	
		BBP	/	N.D.	
		DBP	/	N.D.	
89	COMS photosensitive components	Pb	BL	/	Pass
		Cd	BL	/	
		Hg	BL	/	
		Cr(Cr(VI))	BL	/	
		Br(PBBs&PBDEs)	BL	/	
		DIBP	/	N.D.	
		DEHP	/	N.D.	
		BBP	/	N.D.	
		DBP	/	N.D.	
90	SMD capacitor	Pb	BL	/	Pass
		Cd	BL	/	
		Hg	BL	/	
		Cr(Cr(VI))	BL	/	
		Br(PBBs&PBDEs)	BL	/	
		DIBP	/	N.D.	
		DEHP	/	N.D.	
		BBP	/	N.D.	
		DBP	/	N.D.	
91	Black foam	Pb	BL	/	Pass
		Cd	BL	/	
		Hg	BL	/	
		Cr(Cr(VI))	BL	/	
		Br(PBBs&PBDEs)	BL	/	
		DIBP	/	N.D.	
		DEHP	/	N.D.	
		BBP	/	N.D.	
		DBP	/	N.D.	

## 8. Camera 4

92	Black plastic shell	Pb	BL	/	Pass
		Cd	BL	/	
		Hg	BL	/	
		Cr(Cr(VI))	BL	/	
		Br(PBBs&PBDEs)	BL	/	
		DIBP	/	N.D.	
		DEHP	/	N.D.	
		BBP	/	N.D.	
93	Lens	Pb	BL	/	Pass
		Cd	BL	/	
		Hg	BL	/	
		Cr(Cr(VI))	BL	/	
		Br(PBBs&PBDEs)	BL	/	
		DIBP	/	N.D.	
		DEHP	/	N.D.	
		BBP	/	N.D.	
94	Grey plastic sheet	Pb	BL	/	Pass
		Cd	BL	/	
		Hg	BL	/	
		Cr(Cr(VI))	BL	/	
		Br(PBBs&PBDEs)	BL	/	
		DIBP	/	N.D.	
		DEHP	/	N.D.	
		BBP	/	N.D.	
95	Lens	Pb	BL	/	Pass
		Cd	BL	/	
		Hg	BL	/	
		Cr(Cr(VI))	BL	/	
		Br(PBBs&PBDEs)	BL	/	
		DIBP	/	N.D.	
		DEHP	/	N.D.	
		BBP	/	N.D.	
DBP	/	N.D.			

96	FPC	Pb	BL	/	Pass
		Cd	BL	/	
		Hg	BL	/	
		Cr(Cr(VI))	BL	/	
		Br(PBBs&PBDEs)	BL	/	
		DIBP	/	N.D.	
		DEHP	/	N.D.	
		BBP	/	N.D.	
		DBP	/	N.D.	
97	COMS photosensitive components	Pb	BL	/	Pass
		Cd	BL	/	
		Hg	BL	/	
		Cr(Cr(VI))	BL	/	
		Br(PBBs&PBDEs)	BL	/	
		DIBP	/	N.D.	
		DEHP	/	N.D.	
		BBP	/	N.D.	
		DBP	/	N.D.	
98	SMD capacitor	Pb	BL	/	Pass
		Cd	BL	/	
		Hg	BL	/	
		Cr(Cr(VI))	BL	/	
		Br(PBBs&PBDEs)	BL	/	
		DIBP	/	N.D.	
		DEHP	/	N.D.	
		BBP	/	N.D.	
		DBP	/	N.D.	

## 9. Camera 5

99	Black plastic shell	Pb	BL	/	Pass
		Cd	BL	/	
		Hg	BL	/	
		Cr(Cr(VI))	BL	/	
		Br(PBBs&PBDEs)	BL	/	
		DIBP	/	N.D.	
		DEHP	/	N.D.	
		BBP	/	N.D.	
		DBP	/	N.D.	

100	Lens	Pb	BL	/	Pass
		Cd	BL	/	
		Hg	BL	/	
		Cr(Cr(VI))	BL	/	
		Br(PBBs&PBDEs)	BL	/	
		DIBP	/	N.D.	
		DEHP	/	N.D.	
		BBP	/	N.D.	
		DBP	/	N.D.	
101	FPC	Pb	BL	/	Pass
		Cd	BL	/	
		Hg	BL	/	
		Cr(Cr(VI))	IN	N.D.	
		Br(PBBs&PBDEs)	BL	/	
		DIBP	/	N.D.	
		DEHP	/	N.D.	
		BBP	/	N.D.	
		DBP	/	N.D.	
102	COMS photosensitive components	Pb	BL	/	Pass
		Cd	BL	/	
		Hg	BL	/	
		Cr(Cr(VI))	BL	/	
		Br(PBBs&PBDEs)	BL	/	
		DIBP	/	N.D.	
		DEHP	/	N.D.	
		BBP	/	N.D.	
		DBP	/	N.D.	
103	Black foam	Pb	BL	/	Pass
		Cd	BL	/	
		Hg	BL	/	
		Cr(Cr(VI))	BL	/	
		Br(PBBs&PBDEs)	BL	/	
		DIBP	/	N.D.	
		DEHP	/	N.D.	
		BBP	/	N.D.	
		DBP	/	N.D.	

## 10.PCBA1

104	Blue CPB	Pb	BL	/	Pass
		Cd	BL	/	
		Hg	BL	/	
		Cr(Cr(VI))	BL	/	
		Br(PBBs&PBDEs)	BL	/	
		DIBP	/	N.D.	
		DEHP	/	N.D.	
		BBP	/	N.D.	
105	Silvery metal shield	Pb	BL	/	Pass
		Cd	BL	/	
		Hg	BL	/	
		Cr(Cr(VI))	BL	/	
		Br(PBBs&PBDEs)	/	/	
		DIBP	/	/	
		DEHP	/	/	
		BBP	/	/	
106	White label	Pb	BL	/	Pass
		Cd	BL	/	
		Hg	BL	/	
		Cr(Cr(VI))	BL	/	
		Br(PBBs&PBDEs)	BL	/	
		DIBP	/	N.D.	
		DEHP	/	N.D.	
		BBP	/	N.D.	
107	Silvery metal sheet	Pb	BL	/	Pass
		Cd	BL	/	
		Hg	BL	/	
		Cr(Cr(VI))	IN	N.D.	
		Br(PBBs&PBDEs)	/	/	
		DIBP	/	/	
		DEHP	/	/	
		BBP	/	/	
DBP	/	/			

108	Silvery metal shell of TF card slot	Pb	BL	/	Pass
		Cd	BL	/	
		Hg	BL	/	
		Cr(Cr(VI))	IN	N.D.	
		Br(PBBs&PBDEs)	/	/	
		DIBP	/	/	
		DEHP	/	/	
		BBP	/	/	
		DBP	/	/	
109	Black plastic of TF card slot	Pb	BL	/	Pass
		Cd	BL	/	
		Hg	BL	/	
		Cr(Cr(VI))	BL	/	
		Br(PBBs&PBDEs)	BL	/	
		DIBP	/	N.D.	
		DEHP	/	N.D.	
		BBP	/	N.D.	
		DBP	/	N.D.	
110	Silvery metal sheet of TF card slot	Pb	BL	/	Pass
		Cd	BL	/	
		Hg	BL	/	
		Cr(Cr(VI))	BL	/	
		Br(PBBs&PBDEs)	/	/	
		DIBP	/	/	
		DEHP	/	/	
		BBP	/	/	
		DBP	/	/	
111	Silvery metal	Pb	BL	/	Pass
		Cd	BL	/	
		Hg	BL	/	
		Cr(Cr(VI))	IN	N.D.	
		Br(PBBs&PBDEs)	/	/	
		DIBP	/	/	
		DEHP	/	/	
		BBP	/	/	
		DBP	/	/	



112	Black metal	Pb	BL	/	Pass
		Cd	BL	/	
		Hg	BL	/	
		Cr(Cr(VI))	IN	N.D.	
		Br(PBBs&PBDEs)	/	/	
		DIBP	/	/	
		DEHP	/	/	
		BBP	/	/	
		DBP	/	/	
113	Black interface 1	Pb	BL	/	Pass
		Cd	BL	/	
		Hg	BL	/	
		Cr(Cr(VI))	BL	/	
		Br(PBBs&PBDEs)	BL	/	
		DIBP	/	N.D.	
		DEHP	/	N.D.	
		BBP	/	N.D.	
		DBP	/	N.D.	
114	Metal sheet	Pb	BL	/	Pass
		Cd	BL	/	
		Hg	BL	/	
		Cr(Cr(VI))	BL	/	
		Br(PBBs&PBDEs)	/	/	
		DIBP	/	/	
		DEHP	/	/	
		BBP	/	/	
		DBP	/	/	
115	Black interface 2	Pb	BL	/	Pass
		Cd	BL	/	
		Hg	BL	/	
		Cr(Cr(VI))	BL	/	
		Br(PBBs&PBDEs)	BL	/	
		DIBP	/	N.D.	
		DEHP	/	N.D.	
		BBP	/	N.D.	
		DBP	/	N.D.	

116	Metal sheet	Pb	BL	/	Pass
		Cd	BL	/	
		Hg	BL	/	
		Cr(Cr(VI))	BL	/	
		Br(PBBs&PBDEs)	/	/	
		DIBP	/	/	
		DEHP	/	/	
		BBP	/	/	
		DBP	/	/	
117	White plastic of platooninsert	Pb	BL	/	Pass
		Cd	BL	/	
		Hg	BL	/	
		Cr(Cr(VI))	BL	/	
		Br(PBBs&PBDEs)	BL	/	
		DIBP	/	N.D.	
		DEHP	/	N.D.	
		BBP	/	N.D.	
		DBP	/	N.D.	
118	Black plastic of platooninsert	Pb	BL	/	Pass
		Cd	BL	/	
		Hg	BL	/	
		Cr(Cr(VI))	BL	/	
		Br(PBBs&PBDEs)	BL	/	
		DIBP	/	N.D.	
		DEHP	/	N.D.	
		BBP	/	N.D.	
		DBP	/	N.D.	
119	Yellow adhesive tape of platooninsert	Pb	BL	/	Pass
		Cd	BL	/	
		Hg	BL	/	
		Cr(Cr(VI))	BL	/	
		Br(PBBs&PBDEs)	BL	/	
		DIBP	/	N.D.	
		DEHP	/	N.D.	
		BBP	/	N.D.	
		DBP	/	N.D.	

120	Metal pin of platooninsert	Pb	BL	/	Pass
		Cd	BL	/	
		Hg	BL	/	
		Cr(Cr(VI))	BL	/	
		Br(PBBs&PBDEs)	/	/	
		DIBP	/	/	
		DEHP	/	/	
		BBP	/	/	
		DBP	/	/	
121	Magnet core of inductance	Pb	BL	/	Pass
		Cd	BL	/	
		Hg	BL	/	
		Cr(Cr(VI))	IN	N.D.	
		Br(PBBs&PBDEs)	/	/	
		DIBP	/	/	
		DEHP	/	/	
		BBP	/	/	
		DBP	/	/	
122	Coil of inductance	Pb	BL	/	Pass
		Cd	BL	/	
		Hg	BL	/	
		Cr(Cr(VI))	BL	/	
		Br(PBBs&PBDEs)	/	/	
		DIBP	/	/	
		DEHP	/	/	
		BBP	/	/	
		DBP	/	/	
123	Chip 1	Pb	BL	/	Pass
		Cd	BL	/	
		Hg	BL	/	
		Cr(Cr(VI))	BL	/	
		Br(PBBs&PBDEs)	BL	/	
		DIBP	/	N.D.	
		DEHP	/	N.D.	
		BBP	/	N.D.	
		DBP	/	N.D.	

124	IC 2	Pb	BL	/	Pass
		Cd	BL	/	
		Hg	BL	/	
		Cr(Cr(VI))	BL	/	
		Br(PBBs&PBDEs)	BL	/	
		DIBP	/	N.D.	
		DEHP	/	N.D.	
		BBP	/	N.D.	
		DBP	/	N.D.	
125	IC 3	Pb	BL	/	Pass
		Cd	BL	/	
		Hg	BL	/	
		Cr(Cr(VI))	BL	/	
		Br(PBBs&PBDEs)	BL	/	
		DIBP	/	N.D.	
		DEHP	/	N.D.	
		BBP	/	N.D.	
		DBP	/	N.D.	
126	IC 4	Pb	BL	/	Pass
		Cd	BL	/	
		Hg	BL	/	
		Cr(Cr(VI))	BL	/	
		Br(PBBs&PBDEs)	BL	/	
		DIBP	/	N.D.	
		DEHP	/	N.D.	
		BBP	/	N.D.	
		DBP	/	N.D.	
127	Chip 5	Pb	BL	/	Pass
		Cd	BL	/	
		Hg	BL	/	
		Cr(Cr(VI))	BL	/	
		Br(PBBs&PBDEs)	BL	/	
		DIBP	/	N.D.	
		DEHP	/	N.D.	
		BBP	/	N.D.	
		DBP	/	N.D.	

128	Chip 6	Pb	BL	/	Pass
		Cd	BL	/	
		Hg	BL	/	
		Cr(Cr(VI))	BL	/	
		Br(PBBs&PBDEs)	BL	/	
		DIBP	/	N.D.	
		DEHP	/	N.D.	
		BBP	/	N.D.	
129	Chip 7	Pb	BL	/	Pass
		Cd	BL	/	
		Hg	BL	/	
		Cr(Cr(VI))	BL	/	
		Br(PBBs&PBDEs)	BL	/	
		DIBP	/	N.D.	
		DEHP	/	N.D.	
		BBP	/	N.D.	
130	Chip 8	Pb	BL	/	Pass
		Cd	BL	/	
		Hg	BL	/	
		Cr(Cr(VI))	BL	/	
		Br(PBBs&PBDEs)	BL	/	
		DIBP	/	N.D.	
		DEHP	/	N.D.	
		BBP	/	N.D.	
131	Chip 9	Pb	BL	/	Pass
		Cd	BL	/	
		Hg	BL	/	
		Cr(Cr(VI))	BL	/	
		Br(PBBs&PBDEs)	BL	/	
		DIBP	/	N.D.	
		DEHP	/	N.D.	
		BBP	/	N.D.	
DBP	/	N.D.			

132	Chip 10	Pb	BL	/	Pass
		Cd	BL	/	
		Hg	BL	/	
		Cr(Cr(VI))	BL	/	
		Br(PBBs&PBDEs)	BL	/	
		DIBP	/	N.D.	
		DEHP	/	N.D.	
		BBP	/	N.D.	
		DBP	/	N.D.	
133	Black electronic components	Pb	BL	/	Pass
		Cd	BL	/	
		Hg	BL	/	
		Cr(Cr(VI))	BL	/	
		Br(PBBs&PBDEs)	BL	/	
		DIBP	/	N.D.	
		DEHP	/	N.D.	
		BBP	/	N.D.	
		DBP	/	N.D.	
134	Black rubber sleeve	Pb	BL	/	Pass
		Cd	BL	/	
		Hg	BL	/	
		Cr(Cr(VI))	BL	/	
		Br(PBBs&PBDEs)	BL	/	
		DIBP	/	N.D.	
		DEHP	/	N.D.	
		BBP	/	N.D.	
		DBP	/	N.D.	
135	Patch antenna interface 1	Pb	BL	/	Pass
		Cd	BL	/	
		Hg	BL	/	
		Cr(Cr(VI))	BL	/	
		Br(PBBs&PBDEs)	/	/	
		DIBP	/	/	
		DEHP	/	/	
		BBP	/	/	
		DBP	/	/	

136	Patch antenna interface 2	Pb	BL	/	Pass
		Cd	BL	/	
		Hg	BL	/	
		Cr(Cr(VI))	BL	/	
		Br(PBBs&PBDEs)	/	/	
		DIBP	/	/	
		DEHP	/	/	
		BBP	/	/	
		DBP	/	/	
137	crystal oscillator	Pb	BL	/	Pass
		Cd	BL	/	
		Hg	BL	/	
		Cr(Cr(VI))	BL	/	
		Br(PBBs&PBDEs)	BL	/	
		DIBP	/	N.D.	
		DEHP	/	N.D.	
		BBP	/	N.D.	
		DBP	/	N.D.	
138	SMD resistor	Pb	BL	/	Pass
		Cd	BL	/	
		Hg	BL	/	
		Cr(Cr(VI))	BL	/	
		Br(PBBs&PBDEs)	BL	/	
		DIBP	/	N.D.	
		DEHP	/	N.D.	
		BBP	/	N.D.	
		DBP	/	N.D.	
139	SMD capacitor	Pb	BL	/	Pass
		Cd	BL	/	
		Hg	BL	/	
		Cr(Cr(VI))	BL	/	
		Br(PBBs&PBDEs)	BL	/	
		DIBP	/	N.D.	
		DEHP	/	N.D.	
		BBP	/	N.D.	
		DBP	/	N.D.	



140	SMT blue electronic components	Pb	BL	/	Pass
		Cd	BL	/	
		Hg	BL	/	
		Cr(Cr(VI))	BL	/	
		Br(PBBs&PBDEs)	BL	/	
		DIBP	/	N.D.	
		DEHP	/	N.D.	
		BBP	/	N.D.	
		DBP	/	N.D.	
141	Slip white electronic components	Pb	BL	/	Pass
		Cd	BL	/	
		Hg	BL	/	
		Cr(Cr(VI))	BL	/	
		Br(PBBs&PBDEs)	BL	/	
		DIBP	/	N.D.	
		DEHP	/	N.D.	
		BBP	/	N.D.	
		DBP	/	N.D.	
142	SMD inductor	Pb	BL	/	Pass
		Cd	BL	/	
		Hg	BL	/	
		Cr(Cr(VI))	BL	/	
		Br(PBBs&PBDEs)	/	/	
		DIBP	/	/	
		DEHP	/	/	
		BBP	/	/	
		DBP	/	/	
143	SMT LED lamp 1	Pb	BL	/	Pass
		Cd	BL	/	
		Hg	BL	/	
		Cr(Cr(VI))	BL	/	
		Br(PBBs&PBDEs)	BL	/	
		DIBP	/	N.D.	
		DEHP	/	N.D.	
		BBP	/	N.D.	
		DBP	/	N.D.	

144	SMD LED LAMP 2	Pb	BL	/	Pass
		Cd	BL	/	
		Hg	BL	/	
		Cr(Cr(VI))	BL	/	
		Br(PBBs&PBDEs)	BL	/	
		DIBP	/	N.D.	
		DEHP	/	N.D.	
		DBP	/	N.D.	

## 11.PCBA2

145	Blue PCB	Pb	BL	/	Pass
		Cd	BL	/	
		Hg	BL	/	
		Cr(Cr(VI))	BL	/	
		Br(PBBs&PBDEs)	BL	/	
		DIBP	/	N.D.	
		DEHP	/	N.D.	
		DBP	/	N.D.	
146	Silvery metal shell of type - c interface	Pb	BL	/	Pass
		Cd	BL	/	
		Hg	BL	/	
		Cr(Cr(VI))	IN	N.D.	
		Br(PBBs&PBDEs)	/	/	
		DIBP	/	/	
		DEHP	/	/	
		DBP	/	/	
147	Black plastic of type - c interface	Pb	BL	/	Pass
		Cd	BL	/	
		Hg	BL	/	
		Cr(Cr(VI))	BL	/	
		Br(PBBs&PBDEs)	BL	/	
		DIBP	/	N.D.	
		DEHP	/	N.D.	
		DBP	/	N.D.	

148	Metal sheet of type - c interface	Pb	BL	/	Pass
		Cd	BL	/	
		Hg	BL	/	
		Cr(Cr(VI))	BL	/	
		Br(PBBs&PBDEs)	/	/	
		DIBP	/	/	
		DEHP	/	/	
		BBP	/	/	
		DBP	/	/	
149	Black interface	Pb	BL	/	Pass
		Cd	BL	/	
		Hg	BL	/	
		Cr(Cr(VI))	BL	/	
		Br(PBBs&PBDEs)	BL	/	
		DIBP	/	N.D.	
		DEHP	/	N.D.	
		BBP	/	N.D.	
		DBP	/	N.D.	
150	Metal pin	Pb	BL	/	Pass
		Cd	BL	/	
		Hg	BL	/	
		Cr(Cr(VI))	BL	/	
		Br(PBBs&PBDEs)	/	/	
		DIBP	/	/	
		DEHP	/	/	
		BBP	/	/	
		DBP	/	/	
151	Silvery metal shell of vibration motor	Pb	BL	/	Pass
		Cd	BL	/	
		Hg	BL	/	
		Cr(Cr(VI))	BL	/	
		Br(PBBs&PBDEs)	/	/	
		DIBP	/	/	
		DEHP	/	/	
		BBP	/	/	
		DBP	/	/	

152	Silvery grey tape of vibration motor	Pb	BL	/	Pass
		Cd	BL	/	
		Hg	BL	/	
		Cr(Cr(VI))	BL	/	
		Br(PBBs&PBDEs)	BL	/	
		DIBP	/	N.D.	
		DEHP	/	N.D.	
		BBP	/	N.D.	
		DBP	/	N.D.	
153	PCB of vibration motor	Pb	BL	/	Pass
		Cd	BL	/	
		Hg	BL	/	
		Cr(Cr(VI))	BL	/	
		Br(PBBs&PBDEs)	BL	/	
		DIBP	/	N.D.	
		DEHP	/	N.D.	
		BBP	/	N.D.	
		DBP	/	N.D.	
154	White plastic of vibration motor	Pb	BL	/	Pass
		Cd	BL	/	
		Hg	BL	/	
		Cr(Cr(VI))	BL	/	
		Br(PBBs&PBDEs)	BL	/	
		DIBP	/	N.D.	
		DEHP	/	N.D.	
		BBP	/	N.D.	
		DBP	/	N.D.	
155	Silvery metal block of vibration motor	Pb	BL	/	Pass
		Cd	BL	/	
		Hg	BL	/	
		Cr(Cr(VI))	BL	/	
		Br(PBBs&PBDEs)	/	/	
		DIBP	/	/	
		DEHP	/	/	
		BBP	/	/	
		DBP	/	/	

156	Cupreous metal coil of vibration motor	Pb	BL	/	Pass
		Cd	BL	/	
		Hg	BL	/	
		Cr(Cr(VI))	BL	/	
		Br(PBBs&PBDEs)	/	/	
		DIBP	/	/	
		DEHP	/	/	
		BBP	/	/	
		DBP	/	/	
157	Copper nut of vibration motor	Pb	BL	/	Pass
		Cd	BL	/	
		Hg	BL	/	
		Cr(Cr(VI))	BL	/	
		Br(PBBs&PBDEs)	/	/	
		DIBP	/	/	
		DEHP	/	/	
		BBP	/	/	
		DBP	/	/	
158	Magnet of vibration motor	Pb	BL	/	Pass
		Cd	BL	/	
		Hg	BL	/	
		Cr(Cr(VI))	BL	/	
		Br(PBBs&PBDEs)	/	/	
		DIBP	/	/	
		DEHP	/	/	
		BBP	/	/	
		DBP	/	/	
159	Red wire jacket of vibration motor	Pb	BL	/	Pass
		Cd	BL	/	
		Hg	BL	/	
		Cr(Cr(VI))	BL	/	
		Br(PBBs&PBDEs)	BL	/	
		DIBP	/	N.D.	
		DEHP	/	N.D.	
		BBP	/	N.D.	
		DBP	/	N.D.	

160	Black wire jacket of vibration motor	Pb	BL	/	Pass
		Cd	BL	/	
		Hg	BL	/	
		Cr(Cr(VI))	BL	/	
		Br(PBBs&PBDEs)	BL	/	
		DIBP	/	N.D.	
		DEHP	/	N.D.	
		BBP	/	N.D.	
		DBP	/	N.D.	
161	Core of wire of vibration motor	Pb	BL	/	Pass
		Cd	BL	/	
		Hg	BL	/	
		Cr(Cr(VI))	BL	/	
		Br(PBBs&PBDEs)	/	/	
		DIBP	/	/	
		DEHP	/	/	
		BBP	/	/	
		DBP	/	/	
162	Transparent colloid of vibration motor	Pb	BL	/	Pass
		Cd	BL	/	
		Hg	BL	/	
		Cr(Cr(VI))	BL	/	
		Br(PBBs&PBDEs)	BL	/	
		DIBP	/	N.D.	
		DEHP	/	N.D.	
		BBP	/	N.D.	
		DBP	/	N.D.	
163	SMD MIC	Pb	BL	/	Pass
		Cd	BL	/	
		Hg	BL	/	
		Cr(Cr(VI))	BL	/	
		Br(PBBs&PBDEs)	/	/	
		DIBP	/	/	
		DEHP	/	/	
		BBP	/	/	
		DBP	/	/	

164	Patch antenna interface	Pb	BL	/	Pass
		Cd	BL	/	
		Hg	BL	/	
		Cr(Cr(VI))	BL	/	
		Br(PBBs&PBDEs)	/	/	
		DIBP	/	/	
		DEHP	/	/	
		BBP	/	/	
165	Metal core of wire of antenna	Pb	BL	/	Pass
		Cd	BL	/	
		Hg	BL	/	
		Cr(Cr(VI))	BL	/	
		Br(PBBs&PBDEs)	/	/	
		DIBP	/	/	
		DEHP	/	/	
		BBP	/	/	
166	Silvery metal mesh of antenna	Pb	BL	/	Pass
		Cd	BL	/	
		Hg	BL	/	
		Cr(Cr(VI))	BL	/	
		Br(PBBs&PBDEs)	/	/	
		DIBP	/	/	
		DEHP	/	/	
		BBP	/	/	
167	Black wire jacket of antenna	Pb	BL	/	Pass
		Cd	BL	/	
		Hg	BL	/	
		Cr(Cr(VI))	BL	/	
		Br(PBBs&PBDEs)	BL	/	
		DIBP	/	N.D.	
		DEHP	/	N.D.	
		BBP	/	N.D.	
DBP	/	N.D.			



168	Transparent wire jacket of antenna	Pb	BL	/	Pass
		Cd	BL	/	
		Hg	BL	/	
		Cr(Cr(VI))	BL	/	
		Br(PBBs&PBDEs)	BL	/	
		DIBP	/	N.D.	
		DEHP	/	N.D.	
		BBP	/	N.D.	
		DBP	/	N.D.	
169	Gold metal contact pin of antenna	Pb	BL	/	Pass
		Cd	BL	/	
		Hg	BL	/	
		Cr(Cr(VI))	BL	/	
		Br(PBBs&PBDEs)	/	/	
		DIBP	/	/	
		DEHP	/	/	
		BBP	/	/	
		DBP	/	/	
170	Black plastic shell of antenna	Pb	BL	/	Pass
		Cd	BL	/	
		Hg	BL	/	
		Cr(Cr(VI))	BL	/	
		Br(PBBs&PBDEs)	BL	/	
		DIBP	/	N.D.	
		DEHP	/	N.D.	
		BBP	/	N.D.	
		DBP	/	N.D.	
171	Chip 1	Pb	BL	/	Pass
		Cd	BL	/	
		Hg	BL	/	
		Cr(Cr(VI))	BL	/	
		Br(PBBs&PBDEs)	BL	/	
		DIBP	/	N.D.	
		DEHP	/	N.D.	
		BBP	/	N.D.	
		DBP	/	N.D.	

172	IC 2	Pb	BL	/	Pass
		Cd	BL	/	
		Hg	BL	/	
		Cr(Cr(VI))	BL	/	
		Br(PBBs&PBDEs)	BL	/	
		DIBP	/	N.D.	
		DEHP	/	N.D.	
		BBP	/	N.D.	
		DBP	/	N.D.	
173	SMD resistor	Pb	BL	/	Pass
		Cd	BL	/	
		Hg	BL	/	
		Cr(Cr(VI))	BL	/	
		Br(PBBs&PBDEs)	BL	/	
		DIBP	/	N.D.	
		DEHP	/	N.D.	
		BBP	/	N.D.	
		DBP	/	N.D.	
174	SMD capacitor	Pb	BL	/	Pass
		Cd	BL	/	
		Hg	BL	/	
		Cr(Cr(VI))	BL	/	
		Br(PBBs&PBDEs)	BL	/	
		DIBP	/	N.D.	
		DEHP	/	N.D.	
		BBP	/	N.D.	
		DBP	/	N.D.	
175	Solder	Pb	BL	/	Pass
		Cd	BL	/	
		Hg	BL	/	
		Cr(Cr(VI))	BL	/	
		Br(PBBs&PBDEs)	/	/	
		DIBP	/	/	
		DEHP	/	/	
		BBP	/	/	
		DBP	/	/	

## 12. Battery

176	Silvery tape	Pb	BL	/	Pass
		Cd	BL	/	
		Hg	BL	/	
		Cr(Cr(VI))	BL	/	
		Br(PBBs&PBDEs)	BL	/	
		DIBP	/	N.D.	
		DEHP	/	N.D.	
		BBP	/	N.D.	
177	Black insulation pad	Pb	BL	/	Pass
		Cd	BL	/	
		Hg	BL	/	
		Cr(Cr(VI))	BL	/	
		Br(PBBs&PBDEs)	BL	/	
		DIBP	/	N.D.	
		DEHP	/	N.D.	
		BBP	/	N.D.	
178	Yellow adhesive tape	Pb	BL	/	Pass
		Cd	BL	/	
		Hg	BL	/	
		Cr(Cr(VI))	BL	/	
		Br(PBBs&PBDEs)	BL	/	
		DIBP	/	N.D.	
		DEHP	/	N.D.	
		BBP	/	N.D.	
179	Battery PCB	Pb	BL	/	Pass
		Cd	BL	/	
		Hg	BL	/	
		Cr(Cr(VI))	BL	/	
		Br(PBBs&PBDEs)	IN	N.D.	
		DIBP	/	N.D.	
		DEHP	/	N.D.	
		BBP	/	N.D.	
DBP	/	N.D.			

180	Solder	Pb	BL	/	Pass
		Cd	BL	/	
		Hg	BL	/	
		Cr(Cr(VI))	BL	/	
		Br(PBBs&PBDEs)	/	/	
		DIBP	/	/	
		DEHP	/	/	
		BBP	/	/	
		DBP	/	/	
181	IC 1	Pb	BL	/	Pass
		Cd	BL	/	
		Hg	BL	/	
		Cr(Cr(VI))	BL	/	
		Br(PBBs&PBDEs)	BL	/	
		DIBP	/	N.D.	
		DEHP	/	N.D.	
		BBP	/	N.D.	
		DBP	/	N.D.	
182	IC 2	Pb	BL	/	Pass
		Cd	BL	/	
		Hg	BL	/	
		Cr(Cr(VI))	BL	/	
		Br(PBBs&PBDEs)	BL	/	
		DIBP	/	N.D.	
		DEHP	/	N.D.	
		BBP	/	N.D.	
		DBP	/	N.D.	
183	SMD resistor	Pb	BL	/	Pass
		Cd	BL	/	
		Hg	BL	/	
		Cr(Cr(VI))	BL	/	
		Br(PBBs&PBDEs)	BL	/	
		DIBP	/	N.D.	
		DEHP	/	N.D.	
		BBP	/	N.D.	
		DBP	/	N.D.	

184	SMD capacitor	Pb	BL	/	Pass
		Cd	BL	/	
		Hg	BL	/	
		Cr(Cr(VI))	BL	/	
		Br(PBBs&PBDEs)	BL	/	
		DIBP	/	N.D.	
		DEHP	/	N.D.	
		BBP	/	N.D.	
		DBP	/	N.D.	
185	Silvery metallic film	Pb	BL	/	Pass
		Cd	BL	/	
		Hg	BL	/	
		Cr(Cr(VI))	BL	/	
		Br(PBBs&PBDEs)	/	/	
		DIBP	/	/	
		DEHP	/	/	
		BBP	/	/	
		DBP	/	/	
186	FPC	Pb	BL	/	Pass
		Cd	BL	/	
		Hg	BL	/	
		Cr(Cr(VI))	BL	/	
		Br(PBBs&PBDEs)	BL	/	
		DIBP	/	N.D.	
		DEHP	/	N.D.	
		BBP	/	N.D.	
		DBP	/	N.D.	
187	Black plastic of black interface	Pb	BL	/	Pass
		Cd	BL	/	
		Hg	BL	/	
		Cr(Cr(VI))	BL	/	
		Br(PBBs&PBDEs)	BL	/	
		DIBP	/	N.D.	
		DEHP	/	N.D.	
		BBP	/	N.D.	
		DBP	/	N.D.	

188	Metal contact of black interface	Pb	BL	/	Pass
		Cd	BL	/	
		Hg	BL	/	
		Cr(Cr(VI))	BL	/	
		Br(PBBs&PBDEs)	/	/	
		DIBP	/	/	
		DEHP	/	/	
		BBP	/	/	
189	Metal back plate	Pb	BL	/	Pass
		Cd	BL	/	
		Hg	BL	/	
		Cr(Cr(VI))	IN	N.D.	
		Br(PBBs&PBDEs)	/	/	
		DIBP	/	/	
		DEHP	/	/	
		DBP	/	/	

## 13.Shell of adapter

190	White plastic shell	Pb	BL	/	Pass
		Cd	BL	/	
		Hg	BL	/	
		Cr(Cr(VI))	BL	/	
		Br(PBBs&PBDEs)	BL	/	
		DIBP	/	N.D.	
		DEHP	/	N.D.	
		BBP	/	N.D.	
191	Transparent film	Pb	BL	/	Pass
		Cd	BL	/	
		Hg	BL	/	
		Cr(Cr(VI))	BL	/	
		Br(PBBs&PBDEs)	BL	/	
		DIBP	/	N.D.	
		DEHP	/	N.D.	
		BBP	/	N.D.	
DBP	/	N.D.			

192	Metal pin	Pb	BL	/	Pass
		Cd	BL	/	
		Hg	BL	/	
		Cr(Cr(VI))	BL	/	
		Br(PBBs&PBDEs)	/	/	
		DIBP	/	/	
		DEHP	/	/	
		BBP	/	/	
DBP	/	/			

## 14.PCBA of adapter

193	PCB	Pb	BL	/	Pass
		Cd	BL	/	
		Hg	BL	/	
		Cr(Cr(VI))	BL	/	
		Br(PBBs&PBDEs)	IN	N.D.	
		DIBP	/	N.D.	
		DEHP	/	N.D.	
		BBP	/	N.D.	
DBP	/	N.D.			
194	Black plastic	Pb	BL	/	Pass
		Cd	BL	/	
		Hg	BL	/	
		Cr(Cr(VI))	BL	/	
		Br(PBBs&PBDEs)	IN	PBBs: N.D. PBDEs:357	
		DIBP	/	N.D.	
		DEHP	/	N.D.	
		BBP	/	N.D.	
DBP	/	N.D.			
195	Silvery metal sheet	Pb	BL	/	Pass
		Cd	BL	/	
		Hg	BL	/	
		Cr(Cr(VI))	BL	/	
		Br(PBBs&PBDEs)	/	/	
		DIBP	/	/	
		DEHP	/	/	
		BBP	/	/	
DBP	/	/			



196	Black body of FR1 color ring resistor	Pb	BL	/	Pass
		Cd	BL	/	
		Hg	BL	/	
		Cr(Cr(VI))	BL	/	
		Br(PBBs&PBDEs)	BL	/	
		DIBP	/	N.D.	
		DEHP	/	N.D.	
		BBP	/	N.D.	
		DBP	/	N.D.	
197	Black casing tube of FR1 color ring resistor	Pb	BL	/	Pass
		Cd	BL	/	
		Hg	BL	/	
		Cr(Cr(VI))	BL	/	
		Br(PBBs&PBDEs)	BL	/	
		DIBP	/	N.D.	
		DEHP	/	N.D.	
		BBP	/	N.D.	
		DBP	/	N.D.	
198	Metal pin of FR1 color ring resistor	Pb	BL	/	Pass
		Cd	BL	/	
		Hg	BL	/	
		Cr(Cr(VI))	BL	/	
		Br(PBBs&PBDEs)	/	/	
		DIBP	/	/	
		DEHP	/	/	
		BBP	/	/	
		DBP	/	/	
199	White colloid of FR1 color ring resistor	Pb	BL	/	Pass
		Cd	BL	/	
		Hg	BL	/	
		Cr(Cr(VI))	BL	/	
		Br(PBBs&PBDEs)	BL	/	
		DIBP	/	N.D.	
		DEHP	/	N.D.	
		BBP	/	N.D.	
		DBP	/	N.D.	

200	Aluminum shell of C4 electrolytic capacitor	Pb	BL	/	Pass
		Cd	BL	/	
		Hg	BL	/	
		Cr(Cr(VI))	BL	/	
		Br(PBBs&PBDEs)	/	/	
		DIBP	/	/	
		DEHP	/	/	
		BBP	/	/	
201	Anode foil of C4 electrolytic capacitor	Pb	BL	/	Pass
		Cd	BL	/	
		Hg	BL	/	
		Cr(Cr(VI))	BL	/	
		Br(PBBs&PBDEs)	/	/	
		DIBP	/	/	
		DEHP	/	/	
		BBP	/	/	
202	Cathode foil of C4 electrolytic capacitor	Pb	BL	/	Pass
		Cd	BL	/	
		Hg	BL	/	
		Cr(Cr(VI))	BL	/	
		Br(PBBs&PBDEs)	/	/	
		DIBP	/	/	
		DEHP	/	/	
		BBP	/	/	
203	Electrolytic paper of C4 electrolytic capacitor	Pb	BL	/	Pass
		Cd	BL	/	
		Hg	BL	/	
		Cr(Cr(VI))	BL	/	
		Br(PBBs&PBDEs)	BL	/	
		DIBP	/	N.D.	
		DEHP	/	N.D.	
		BBP	/	N.D.	
DBP	/	N.D.			

204	Rubber blanket of C4 electrolytic capacitor	Pb	BL	/	Pass
		Cd	BL	/	
		Hg	BL	/	
		Cr(Cr(VI))	BL	/	
		Br(PBBs&PBDEs)	BL	/	
		DIBP	/	N.D.	
		DEHP	/	N.D.	
		BBP	/	N.D.	
		DBP	/	N.D.	
205	Electrode pin of C4 electrolytic capacitor	Pb	BL	/	Pass
		Cd	BL	/	
		Hg	BL	/	
		Cr(Cr(VI))	BL	/	
		Br(PBBs&PBDEs)	/	/	
		DIBP	/	/	
		DEHP	/	/	
		BBP	/	/	
		DBP	/	/	
206	Plastic jacket of C4 electrolytic capacitor	Pb	BL	/	Pass
		Cd	BL	/	
		Hg	BL	/	
		Cr(Cr(VI))	BL	/	
		Br(PBBs&PBDEs)	BL	/	
		DIBP	/	N.D.	
		DEHP	/	N.D.	
		BBP	/	N.D.	
		DBP	/	N.D.	
207	Plastic skeleton of transformer	Pb	BL	/	Pass
		Cd	BL	/	
		Hg	BL	/	
		Cr(Cr(VI))	BL	/	
		Br(PBBs&PBDEs)	BL	/	
		DIBP	/	N.D.	
		DEHP	/	N.D.	
		BBP	/	N.D.	
		DBP	/	N.D.	

208	Magnet core of transformer	Pb	BL	/	Pass
		Cd	BL	/	
		Hg	BL	/	
		Cr(Cr(VI))	BL	/	
		Br(PBBs&PBDEs)	/	/	
		DIBP	/	/	
		DEHP	/	/	
		BBP	/	/	
		DBP	/	/	
209	Cupreous metal coil of transformer	Pb	BL	/	Pass
		Cd	BL	/	
		Hg	BL	/	
		Cr(Cr(VI))	BL	/	
		Br(PBBs&PBDEs)	/	/	
		DIBP	/	/	
		DEHP	/	/	
		BBP	/	/	
		DBP	/	/	
210	Varnished wire of transformer	Pb	BL	/	Pass
		Cd	BL	/	
		Hg	BL	/	
		Cr(Cr(VI))	BL	/	
		Br(PBBs&PBDEs)	BL	/	
		DIBP	/	N.D.	
		DEHP	/	N.D.	
		BBP	/	N.D.	
		DBP	/	N.D.	
211	Metal pin of transformer	Pb	BL	/	Pass
		Cd	BL	/	
		Hg	BL	/	
		Cr(Cr(VI))	BL	/	
		Br(PBBs&PBDEs)	/	/	
		DIBP	/	/	
		DEHP	/	/	
		BBP	/	/	
		DBP	/	/	

212	Blue tape of transformer	Pb	BL	/	Pass
		Cd	BL	/	
		Hg	BL	/	
		Cr(Cr(VI))	BL	/	
		Br(PBBs&PBDEs)	BL	/	
		DIBP	/	N.D.	
		DEHP	/	N.D.	
		BBP	/	N.D.	
		DBP	/	N.D.	
213	Yellow adhesive tape of transformer	Pb	BL	/	Pass
		Cd	BL	/	
		Hg	BL	/	
		Cr(Cr(VI))	BL	/	
		Br(PBBs&PBDEs)	BL	/	
		DIBP	/	N.D.	
		DEHP	/	N.D.	
		BBP	/	N.D.	
		DBP	/	N.D.	
214	Tag paper of transformer	Pb	BL	/	Pass
		Cd	BL	/	
		Hg	BL	/	
		Cr(Cr(VI))	BL	/	
		Br(PBBs&PBDEs)	BL	/	
		DIBP	/	N.D.	
		DEHP	/	N.D.	
		BBP	/	N.D.	
		DBP	/	N.D.	
215	Aluminum shell of C1 electrolytic capacitor	Pb	BL	/	Pass
		Cd	BL	/	
		Hg	BL	/	
		Cr(Cr(VI))	BL	/	
		Br(PBBs&PBDEs)	/	/	
		DIBP	/	/	
		DEHP	/	/	
		BBP	/	/	
		DBP	/	/	

216	Anode foil of C1 electrolytic capacitor	Pb	BL	/	Pass
		Cd	BL	/	
		Hg	BL	/	
		Cr(Cr(VI))	BL	/	
		Br(PBBs&PBDEs)	/	/	
		DIBP	/	/	
		DEHP	/	/	
		BBP	/	/	
217	Cathode foil of C1 electrolytic capacitor	Pb	BL	/	Pass
		Cd	BL	/	
		Hg	BL	/	
		Cr(Cr(VI))	BL	/	
		Br(PBBs&PBDEs)	/	/	
		DIBP	/	/	
		DEHP	/	/	
		BBP	/	/	
218	Electrolytic paper of C1 electrolytic capacitor	Pb	BL	/	Pass
		Cd	BL	/	
		Hg	BL	/	
		Cr(Cr(VI))	BL	/	
		Br(PBBs&PBDEs)	BL	/	
		DIBP	/	N.D.	
		DEHP	/	N.D.	
		BBP	/	N.D.	
219	Rubber blanket of C1 electrolytic capacitor	Pb	BL	/	Pass
		Cd	BL	/	
		Hg	BL	/	
		Cr(Cr(VI))	BL	/	
		Br(PBBs&PBDEs)	BL	/	
		DIBP	/	N.D.	
		DEHP	/	N.D.	
		BBP	/	N.D.	
DBP	/	N.D.			

220	Electrode pin of C1 electrolytic capacitor	Pb	BL	/	Pass
		Cd	BL	/	
		Hg	BL	/	
		Cr(Cr(VI))	BL	/	
		Br(PBBs&PBDEs)	/	/	
		DIBP	/	/	
		DEHP	/	/	
		BBP	/	/	
		DBP	/	/	
221	Plastic jacket of C1 electrolytic capacitor	Pb	BL	/	Pass
		Cd	BL	/	
		Hg	BL	/	
		Cr(Cr(VI))	BL	/	
		Br(PBBs&PBDEs)	BL	/	
		DIBP	/	N.D.	
		DEHP	/	N.D.	
		BBP	/	N.D.	
		DBP	/	N.D.	
222	Green body of L1 color ring inductance	Pb	BL	/	Pass
		Cd	BL	/	
		Hg	BL	/	
		Cr(Cr(VI))	BL	/	
		Br(PBBs&PBDEs)	BL	/	
		DIBP	/	N.D.	
		DEHP	/	N.D.	
		BBP	/	N.D.	
		DBP	/	N.D.	
223	Metal pin of L1 color ring inductance	Pb	BL	/	Pass
		Cd	BL	/	
		Hg	BL	/	
		Cr(Cr(VI))	BL	/	
		Br(PBBs&PBDEs)	/	/	
		DIBP	/	/	
		DEHP	/	/	
		BBP	/	/	
		DBP	/	/	



224	Blue body of CY1 capacitance	Pb	BL	/	Pass
		Cd	BL	/	
		Hg	BL	/	
		Cr(Cr(VI))	BL	/	
		Br(PBBs&PBDEs)	BL	/	
		DIBP	/	N.D.	
		DEHP	/	N.D.	
		BBP	/	N.D.	
		DBP	/	N.D.	
225	Metal pin of CY1 capacitance	Pb	BL	/	Pass
		Cd	BL	/	
		Hg	BL	/	
		Cr(Cr(VI))	BL	/	
		Br(PBBs&PBDEs)	/	/	
		DIBP	/	/	
		DEHP	/	/	
		BBP	/	/	
		DBP	/	/	
226	Aluminum shell of C8 electrolytic capacitor	Pb	BL	/	Pass
		Cd	BL	/	
		Hg	BL	/	
		Cr(Cr(VI))	BL	/	
		Br(PBBs&PBDEs)	/	/	
		DIBP	/	/	
		DEHP	/	/	
		BBP	/	/	
		DBP	/	/	
227	Anode foil of C8 electrolytic capacitor	Pb	BL	/	Pass
		Cd	BL	/	
		Hg	BL	/	
		Cr(Cr(VI))	BL	/	
		Br(PBBs&PBDEs)	/	/	
		DIBP	/	/	
		DEHP	/	/	
		BBP	/	/	
		DBP	/	/	

228	Cathode foil of C8 electrolytic capacitor	Pb	BL	/	Pass
		Cd	BL	/	
		Hg	BL	/	
		Cr(Cr(VI))	BL	/	
		Br(PBBs&PBDEs)	/	/	
		DIBP	/	/	
		DEHP	/	/	
		BBP	/	/	
229	Electrolytic paper of C8 electrolytic capacitor	Pb	BL	/	Pass
		Cd	BL	/	
		Hg	BL	/	
		Cr(Cr(VI))	BL	/	
		Br(PBBs&PBDEs)	BL	/	
		DIBP	/	N.D.	
		DEHP	/	N.D.	
		BBP	/	N.D.	
230	Rubber blanket of C8 electrolytic capacitor	Pb	BL	/	Pass
		Cd	BL	/	
		Hg	BL	/	
		Cr(Cr(VI))	BL	/	
		Br(PBBs&PBDEs)	BL	/	
		DIBP	/	N.D.	
		DEHP	/	N.D.	
		BBP	/	N.D.	
231	Electrode pin of C8 electrolytic capacitor	Pb	BL	/	Pass
		Cd	BL	/	
		Hg	BL	/	
		Cr(Cr(VI))	BL	/	
		Br(PBBs&PBDEs)	/	/	
		DIBP	/	/	
		DEHP	/	/	
		BBP	/	/	
DBP	/	/			

232	Silvery metal shell of USB interface	Pb	BL	/	Pass
		Cd	BL	/	
		Hg	BL	/	
		Cr(Cr(VI))	BL	/	
		Br(PBBs&PBDEs)	/	/	
		DIBP	/	/	
		DEHP	/	/	
		BBP	/	/	
		DBP	/	/	
233	Metal sheet of USB interface	Pb	BL	/	Pass
		Cd	BL	/	
		Hg	BL	/	
		Cr(Cr(VI))	BL	/	
		Br(PBBs&PBDEs)	/	/	
		DIBP	/	/	
		DEHP	/	/	
		BBP	/	/	
		DBP	/	/	
234	White plastic of USB interface	Pb	BL	/	Pass
		Cd	BL	/	
		Hg	BL	/	
		Cr(Cr(VI))	BL	/	
		Br(PBBs&PBDEs)	IN	N.D.	
		DIBP	/	N.D.	
		DEHP	/	N.D.	
		BBP	/	N.D.	
		DBP	/	N.D.	
235	Aluminum shell of C7 electrolytic capacitor	Pb	BL	/	Pass
		Cd	BL	/	
		Hg	BL	/	
		Cr(Cr(VI))	BL	/	
		Br(PBBs&PBDEs)	/	/	
		DIBP	/	/	
		DEHP	/	/	
		BBP	/	/	
		DBP	/	/	

236	Anode foil of C7 electrolytic capacitor	Pb	BL	/	Pass
		Cd	BL	/	
		Hg	BL	/	
		Cr(Cr(VI))	BL	/	
		Br(PBBs&PBDEs)	/	/	
		DIBP	/	/	
		DEHP	/	/	
		BBP	/	/	
237	Cathode foil of C7 electrolytic capacitor	Pb	BL	/	Pass
		Cd	BL	/	
		Hg	BL	/	
		Cr(Cr(VI))	BL	/	
		Br(PBBs&PBDEs)	/	/	
		DIBP	/	/	
		DEHP	/	/	
		BBP	/	/	
238	Electrolytic paper of C7 electrolytic capacitor	Pb	BL	/	Pass
		Cd	BL	/	
		Hg	BL	/	
		Cr(Cr(VI))	BL	/	
		Br(PBBs&PBDEs)	BL	/	
		DIBP	/	N.D.	
		DEHP	/	N.D.	
		BBP	/	N.D.	
239	Rubber blanket of C7 electrolytic capacitor	Pb	BL	/	Pass
		Cd	BL	/	
		Hg	BL	/	
		Cr(Cr(VI))	BL	/	
		Br(PBBs&PBDEs)	BL	/	
		DIBP	/	N.D.	
		DEHP	/	N.D.	
		BBP	/	N.D.	
DBP	/	N.D.			

240	Electrode pin of C7 electrolytic capacitor	Pb	BL	/	Pass
		Cd	BL	/	
		Hg	BL	/	
		Cr(Cr(VI))	BL	/	
		Br(PBBs&PBDEs)	/	/	
		DIBP	/	/	
		DEHP	/	/	
		BBP	/	/	
		DBP	/	/	
241	Plastic jacket of C7 electrolytic capacitor	Pb	BL	/	Pass
		Cd	BL	/	
		Hg	BL	/	
		Cr(Cr(VI))	BL	/	
		Br(PBBs&PBDEs)	BL	/	
		DIBP	/	N.D.	
		DEHP	/	N.D.	
		BBP	/	N.D.	
		DBP	/	N.D.	
242	U1 IC	Pb	BL	/	Pass
		Cd	BL	/	
		Hg	BL	/	
		Cr(Cr(VI))	BL	/	
		Br(PBBs&PBDEs)	BL	/	
		DIBP	/	N.D.	
		DEHP	/	N.D.	
		BBP	/	N.D.	
		DBP	/	N.D.	
243	U3 chip	Pb	BL	/	Pass
		Cd	BL	/	
		Hg	BL	/	
		Cr(Cr(VI))	BL	/	
		Br(PBBs&PBDEs)	BL	/	
		DIBP	/	N.D.	
		DEHP	/	N.D.	
		BBP	/	N.D.	
		DBP	/	N.D.	

244	SMD resistor	Pb	BL	/	Pass
		Cd	BL	/	
		Hg	BL	/	
		Cr(Cr(VI))	BL	/	
		Br(PBBs&PBDEs)	BL	/	
		DIBP	/	N.D.	
		DEHP	/	N.D.	
		BBP	/	N.D.	
		DBP	/	N.D.	
245	SMD capacitor	Pb	BL	/	Pass
		Cd	BL	/	
		Hg	BL	/	
		Cr(Cr(VI))	BL	/	
		Br(PBBs&PBDEs)	BL	/	
		DIBP	/	N.D.	
		DEHP	/	N.D.	
		BBP	/	N.D.	
		DBP	/	N.D.	
246	SMD diode	Pb	2670 <sup>#2</sup>	/	Pass
		Cd	BL	/	
		Hg	BL	/	
		Cr(Cr(VI))	BL	/	
		Br(PBBs&PBDEs)	BL	/	
		DIBP	/	N.D.	
		DEHP	/	N.D.	
		BBP	/	N.D.	
		DBP	/	N.D.	
247	SMD inductor	Pb	BL	/	Pass
		Cd	BL	/	
		Hg	BL	/	
		Cr(Cr(VI))	BL	/	
		Br(PBBs&PBDEs)	/	/	
		DIBP	/	/	
		DEHP	/	/	
		BBP	/	/	
		DBP	/	/	

248	Solder	Pb	BL	/	Pass
		Cd	BL	/	
		Hg	BL	/	
		Cr(Cr(VI))	BL	/	
		Br(PBBs&PBDEs)	/	/	
		DIBP	/	/	
		DEHP	/	/	
		BBP	/	/	
DBP	/	/			

## 15.Cable

249	Silvery metal shell of USB interface	Pb	BL	/	Pass
		Cd	BL	/	
		Hg	BL	/	
		Cr(Cr(VI))	BL	/	
		Br(PBBs&PBDEs)	/	/	
		DIBP	/	/	
		DEHP	/	/	
		BBP	/	/	
DBP	/	/			
250	Metal sheet of USB interface	Pb	BL	/	Pass
		Cd	BL	/	
		Hg	BL	/	
		Cr(Cr(VI))	BL	/	
		Br(PBBs&PBDEs)	/	/	
		DIBP	/	/	
		DEHP	/	/	
		BBP	/	/	
DBP	/	/			
251	White plastic of USB interface	Pb	BL	/	Pass
		Cd	BL	/	
		Hg	BL	/	
		Cr(Cr(VI))	BL	/	
		Br(PBBs&PBDEs)	IN	N.D.	
		DIBP	/	N.D.	
		DEHP	/	N.D.	
		BBP	/	N.D.	
DBP	/	N.D.			



252	Translucent plastic of USB interface	Pb	BL	/	Pass
		Cd	BL	/	
		Hg	BL	/	
		Cr(Cr(VI))	BL	/	
		Br(PBBs&PBDEs)	BL	/	
		DIBP	/	N.D.	
		DEHP	/	N.D.	
		BBP	/	N.D.	
		DBP	/	N.D.	
253	White encapsulation of USB interface	Pb	BL	/	Pass
		Cd	BL	/	
		Hg	BL	/	
		Cr(Cr(VI))	BL	/	
		Br(PBBs&PBDEs)	BL	/	
		DIBP	/	N.D.	
		DEHP	/	N.D.	
		BBP	/	N.D.	
		DBP	/	N.D.	
254	Silvery QR code of USB interface	Pb	BL	/	Pass
		Cd	BL	/	
		Hg	BL	/	
		Cr(Cr(VI))	BL	/	
		Br(PBBs&PBDEs)	BL	/	
		DIBP	/	N.D.	
		DEHP	/	N.D.	
		BBP	/	N.D.	
		DBP	/	N.D.	
255	Silvery metal shell of type - c interface	Pb	BL	/	Pass
		Cd	BL	/	
		Hg	BL	/	
		Cr(Cr(VI))	IN	N.D.	
		Br(PBBs&PBDEs)	/	/	
		DIBP	/	/	
		DEHP	/	/	
		BBP	/	/	
		DBP	/	/	

256	Translucent plastic of type - c interface	Pb	BL	/	Pass
		Cd	BL	/	
		Hg	BL	/	
		Cr(Cr(VI))	BL	/	
		Br(PBBs&PBDEs)	BL	/	
		DIBP	/	N.D.	
		DEHP	/	N.D.	
		BBP	/	N.D.	
		DBP	/	N.D.	
257	Metal sheet of type - c interface	Pb	BL	/	Pass
		Cd	BL	/	
		Hg	BL	/	
		Cr(Cr(VI))	BL	/	
		Br(PBBs&PBDEs)	/	/	
		DIBP	/	/	
		DEHP	/	/	
		BBP	/	/	
		DBP	/	/	
258	White plastic of type - c interface	Pb	BL	/	Pass
		Cd	BL	/	
		Hg	BL	/	
		Cr(Cr(VI))	BL	/	
		Br(PBBs&PBDEs)	BL	/	
		DIBP	/	N.D.	
		DEHP	/	N.D.	
		BBP	/	N.D.	
		DBP	/	N.D.	
259	PCB of type - c interface	Pb	BL	/	Pass
		Cd	BL	/	
		Hg	BL	/	
		Cr(Cr(VI))	BL	/	
		Br(PBBs&PBDEs)	IN	N.D.	
		DIBP	/	N.D.	
		DEHP	/	N.D.	
		BBP	/	N.D.	
		DBP	/	N.D.	

260	SMD resistor of type - c interface	Pb	BL	/	Pass
		Cd	BL	/	
		Hg	BL	/	
		Cr(Cr(VI))	BL	/	
		Br(PBBs&PBDEs)	BL	/	
		DIBP	/	N.D.	
		DEHP	/	N.D.	
		BBP	/	N.D.	
		DBP	/	N.D.	
261	SMD capacitor of type - c interface	Pb	BL	/	Pass
		Cd	BL	/	
		Hg	BL	/	
		Cr(Cr(VI))	BL	/	
		Br(PBBs&PBDEs)	BL	/	
		DIBP	/	N.D.	
		DEHP	/	N.D.	
		BBP	/	N.D.	
		DBP	/	N.D.	
262	White encapsulation of type - c interface	Pb	BL	/	Pass
		Cd	BL	/	
		Hg	BL	/	
		Cr(Cr(VI))	BL	/	
		Br(PBBs&PBDEs)	BL	/	
		DIBP	/	N.D.	
		DEHP	/	N.D.	
		BBP	/	N.D.	
		DBP	/	N.D.	
263	White plastic wire jacket	Pb	BL	/	Pass
		Cd	BL	/	
		Hg	BL	/	
		Cr(Cr(VI))	BL	/	
		Br(PBBs&PBDEs)	BL	/	
		DIBP	/	N.D.	
		DEHP	/	N.D.	
		BBP	/	N.D.	
		DBP	/	N.D.	

264	Black wire jacket	Pb	BL	/	Pass
		Cd	BL	/	
		Hg	BL	/	
		Cr(Cr(VI))	BL	/	
		Br(PBBs&PBDEs)	BL	/	
		DIBP	/	N.D.	
		DEHP	/	N.D.	
		BBP	/	N.D.	
		DBP	/	N.D.	
265	White wire jacket	Pb	BL	/	Pass
		Cd	BL	/	
		Hg	BL	/	
		Cr(Cr(VI))	BL	/	
		Br(PBBs&PBDEs)	BL	/	
		DIBP	/	N.D.	
		DEHP	/	N.D.	
		BBP	/	N.D.	
		DBP	/	N.D.	
266	Green wire jacket	Pb	BL	/	Pass
		Cd	BL	/	
		Hg	BL	/	
		Cr(Cr(VI))	BL	/	
		Br(PBBs&PBDEs)	BL	/	
		DIBP	/	N.D.	
		DEHP	/	N.D.	
		BBP	/	N.D.	
		DBP	/	N.D.	
267	Red wire jacket	Pb	BL	/	Pass
		Cd	BL	/	
		Hg	BL	/	
		Cr(Cr(VI))	BL	/	
		Br(PBBs&PBDEs)	BL	/	
		DIBP	/	N.D.	
		DEHP	/	N.D.	
		BBP	/	N.D.	
		DBP	/	N.D.	

268	Core of wire	Pb	BL	/	Pass
		Cd	BL	/	
		Hg	BL	/	
		Cr(Cr(VI))	BL	/	
		Br(PBBs&PBDEs)	/	/	
		DIBP	/	/	
		DEHP	/	/	
		BBP	/	/	
269	Transparent plastic film	Pb	BL	/	Pass
		Cd	BL	/	
		Hg	BL	/	
		Cr(Cr(VI))	BL	/	
		Br(PBBs&PBDEs)	BL	/	
		DIBP	/	N.D.	
		DEHP	/	N.D.	
		BBP	/	N.D.	
DBP	/	N.D.			

## 16. Shell of headphone

270	White plastic shell	Pb	BL	/	Pass
		Cd	BL	/	
		Hg	BL	/	
		Cr(Cr(VI))	BL	/	
		Br(PBBs&PBDEs)	BL	/	
		DIBP	/	N.D.	
		DEHP	/	N.D.	
		BBP	/	N.D.	
271	Black fabric net	Pb	BL	/	Pass
		Cd	BL	/	
		Hg	BL	/	
		Cr(Cr(VI))	BL	/	
		Br(PBBs&PBDEs)	BL	/	
		DIBP	/	N.D.	
		DEHP	/	N.D.	
		BBP	/	N.D.	
DBP	/	N.D.			

272	White plastic	Pb	BL	/	Pass
		Cd	BL	/	
		Hg	BL	/	
		Cr(Cr(VI))	BL	/	
		Br(PBBs&PBDEs)	BL	/	
		DIBP	/	N.D.	
		DEHP	/	N.D.	
		DBP	/	N.D.	

## 17. Horn of headphone

273	Silvery metal shell	Pb	IN	N.D.	Pass
		Cd	IN	N.D.	
		Hg	BL	/	
		Cr(Cr(VI))	BL	/	
		Br(PBBs&PBDEs)	/	/	
		DIBP	/	/	
		DEHP	/	/	
		DBP	/	/	
274	Magnet	Pb	BL	/	Pass
		Cd	BL	/	
		Hg	BL	/	
		Cr(Cr(VI))	BL	/	
		Br(PBBs&PBDEs)	/	/	
		DIBP	/	/	
		DEHP	/	/	
		DBP	/	/	
275	Transparent film	Pb	BL	/	Pass
		Cd	BL	/	
		Hg	BL	/	
		Cr(Cr(VI))	BL	/	
		Br(PBBs&PBDEs)	BL	/	
		DIBP	/	N.D.	
		DEHP	/	N.D.	
		DBP	/	N.D.	

276	Coil	Pb	BL	/	Pass
		Cd	BL	/	
		Hg	BL	/	
		Cr(Cr(VI))	BL	/	
		Br(PBBs&PBDEs)	/	/	
		DIBP	/	/	
		DEHP	/	/	
		BBP	/	/	
		DBP	/	/	
277	Silvery metal	Pb	BL	/	Pass
		Cd	BL	/	
		Hg	BL	/	
		Cr(Cr(VI))	BL	/	
		Br(PBBs&PBDEs)	/	/	
		DIBP	/	/	
		DEHP	/	/	
		BBP	/	/	
		DBP	/	/	
278	Black foam	Pb	BL	/	Pass
		Cd	BL	/	
		Hg	BL	/	
		Cr(Cr(VI))	BL	/	
		Br(PBBs&PBDEs)	BL	/	
		DIBP	/	N.D.	
		DEHP	/	484	
		BBP	/	N.D.	
		DBP	/	252	
279	PCB	Pb	BL	/	Pass
		Cd	BL	/	
		Hg	BL	/	
		Cr(Cr(VI))	BL	/	
		Br(PBBs&PBDEs)	BL	/	
		DIBP	/	N.D.	
		DEHP	/	N.D.	
		BBP	/	N.D.	
		DBP	/	N.D.	



280	Solder	Pb	BL	/	Pass
		Cd	BL	/	
		Hg	BL	/	
		Cr(Cr(VI))	BL	/	
		Br(PBBs&PBDEs)	/	/	
		DIBP	/	/	
		DEHP	/	/	
		BBP	/	/	
281	White colloid	Pb	BL	/	Pass
		Cd	BL	/	
		Hg	BL	/	
		Cr(Cr(VI))	BL	/	
		Br(PBBs&PBDEs)	BL	/	
		DIBP	/	N.D.	
		DEHP	/	N.D.	
		BBP	/	N.D.	
282	Black fabric net	Pb	BL	/	Pass
		Cd	BL	/	
		Hg	BL	/	
		Cr(Cr(VI))	BL	/	
		Br(PBBs&PBDEs)	BL	/	
		DIBP	/	N.D.	
		DEHP	/	N.D.	
		BBP	/	N.D.	
		DBP	/	N.D.	

## 18. Wire of headphone

283	Silvery metal shell of type - c interface	Pb	BL	/	Pass
		Cd	BL	/	
		Hg	BL	/	
		Cr(Cr(VI))	IN	N.D.	
		Br(PBBs&PBDEs)	/	/	
		DIBP	/	/	
		DEHP	/	/	
		BBP	/	/	
		DBP	/	/	

284	Black plastic of type - c interface	Pb	BL	/	Pass
		Cd	BL	/	
		Hg	BL	/	
		Cr(Cr(VI))	BL	/	
		Br(PBBs&PBDEs)	BL	/	
		DIBP	/	N.D.	
		DEHP	/	N.D.	
		BBP	/	N.D.	
		DBP	/	N.D.	
285	Metal sheet of type - c interface	Pb	BL	/	Pass
		Cd	BL	/	
		Hg	BL	/	
		Cr(Cr(VI))	BL	/	
		Br(PBBs&PBDEs)	/	/	
		DIBP	/	/	
		DEHP	/	/	
		BBP	/	/	
		DBP	/	/	
286	Light gray soft plastic of type - c interface	Pb	BL	/	Pass
		Cd	BL	/	
		Hg	BL	/	
		Cr(Cr(VI))	BL	/	
		Br(PBBs&PBDEs)	BL	/	
		DIBP	/	N.D.	
		DEHP	/	N.D.	
		BBP	/	N.D.	
		DBP	/	N.D.	
287	White plastic of type - c interface	Pb	BL	/	Pass
		Cd	BL	/	
		Hg	BL	/	
		Cr(Cr(VI))	BL	/	
		Br(PBBs&PBDEs)	BL	/	
		DIBP	/	N.D.	
		DEHP	/	N.D.	
		BBP	/	N.D.	
		DBP	/	N.D.	

288	PCB of type - c interface	Pb	BL	/	Pass
		Cd	BL	/	
		Hg	BL	/	
		Cr(Cr(VI))	BL	/	
		Br(PBBs&PBDEs)	IN	N.D.	
		DIBP	/	N.D.	
		DEHP	/	N.D.	
		BBP	/	N.D.	
		DBP	/	N.D.	
289	Solder of type - c interface	Pb	IN	401	Pass
		Cd	BL	/	
		Hg	BL	/	
		Cr(Cr(VI))	BL	/	
		Br(PBBs&PBDEs)	/	/	
		DIBP	/	/	
		DEHP	/	/	
		BBP	/	/	
		DBP	/	/	
290	White plastic wire jacket	Pb	BL	/	Pass
		Cd	BL	/	
		Hg	BL	/	
		Cr(Cr(VI))	BL	/	
		Br(PBBs&PBDEs)	BL	/	
		DIBP	/	N.D.	
		DEHP	/	N.D.	
		BBP	/	N.D.	
		DBP	/	N.D.	
291	Green wire core	Pb	BL	/	Pass
		Cd	BL	/	
		Hg	BL	/	
		Cr(Cr(VI))	BL	/	
		Br(PBBs&PBDEs)	/	/	
		DIBP	/	/	
		DEHP	/	/	
		BBP	/	/	
		DBP	/	/	

292	Copper wire core	Pb	BL	/	Pass
		Cd	BL	/	
		Hg	BL	/	
		Cr(Cr(VI))	BL	/	
		Br(PBBs&PBDEs)	/	/	
		DIBP	/	/	
		DEHP	/	/	
		BBP	/	/	
293	Light grey rubber	Pb	BL	/	Pass
		Cd	BL	/	
		Hg	BL	/	
		Cr(Cr(VI))	BL	/	
		Br(PBBs&PBDEs)	BL	/	
		DIBP	/	N.D.	
		DEHP	/	N.D.	
		DBP	/	N.D.	

## 19.PCBA of headphone

294	Blue PCB	Pb	BL	/	Pass
		Cd	BL	/	
		Hg	BL	/	
		Cr(Cr(VI))	BL	/	
		Br(PBBs&PBDEs)	IN	N.D.	
		DIBP	/	N.D.	
		DEHP	/	N.D.	
		BBP	/	N.D.	
295	Transparent tape	Pb	BL	/	Pass
		Cd	BL	/	
		Hg	BL	/	
		Cr(Cr(VI))	BL	/	
		Br(PBBs&PBDEs)	BL	/	
		DIBP	/	N.D.	
		DEHP	/	N.D.	
		DBP	/	N.D.	

296	Metal shrapnel	Pb	BL	/	Pass
		Cd	BL	/	
		Hg	BL	/	
		Cr(Cr(VI))	IN	N.D.	
		Br(PBBs&PBDEs)	/	/	
		DIBP	/	/	
		DEHP	/	/	
		BBP	/	/	
		DBP	/	/	
297	Microphone body	Pb	BL	/	Pass
		Cd	BL	/	
		Hg	BL	/	
		Cr(Cr(VI))	BL	/	
		Br(PBBs&PBDEs)	BL	/	
		DIBP	/	N.D.	
		DEHP	/	N.D.	
		BBP	/	N.D.	
		DBP	/	N.D.	
298	Metal pin	Pb	BL	/	Pass
		Cd	BL	/	
		Hg	BL	/	
		Cr(Cr(VI))	BL	/	
		Br(PBBs&PBDEs)	/	/	
		DIBP	/	/	
		DEHP	/	/	
		BBP	/	/	
		DBP	/	/	
299	SMD resistor	Pb	BL	/	Pass
		Cd	BL	/	
		Hg	BL	/	
		Cr(Cr(VI))	BL	/	
		Br(PBBs&PBDEs)	BL	/	
		DIBP	/	N.D.	
		DEHP	/	N.D.	
		BBP	/	N.D.	
		DBP	/	N.D.	

300	Solder	Pb	BL	/	Pass
		Cd	BL	/	
		Hg	BL	/	
		Cr(Cr(VI))	BL	/	
		Br(PBBs&PBDEs)	/	/	
		DIBP	/	/	
		DEHP	/	/	
		BBP	/	/	
		DBP	/	/	

Note: 1.N.D. = Not Detected (<MDL) MDL = Method Detection Limit  
mg/kg = ppm =0.0001% / =Not Regulated or Not Applicable

2. BL = Under the XRF screening limit

IN = Further chemical test will be conducted when the screening result inconclusive

OL = Further chemical test will be conducted while the result is above the screening limit.

3. For metal samples, the sample is negative for Cr(VI), if the Cr(VI) concentration is less than 0.10  $\mu\text{g}/\text{cm}^2$ , the coating is considered a non- Cr(VI) based coating;

The sample is positive for Cr(VI), if the Cr(VI) concentration is greater than 0.13  $\mu\text{g}/\text{cm}^2$ ,

The sample coating is considered to contain Cr(VI);

The result is considered to be inconclusive, the Cr(VI) concentration is between the

0.10  $\mu\text{g}/\text{cm}^2$  and 0.13  $\mu\text{g}/\text{cm}^2$ , Unavoidable coating variations may influence the determination.

Because the storage condition and production date of the sample are not known, the test results of the sample of hexavalent chromium can only represent the state of hexavalent chromium in the samples tested.

Remark: 1. The screening results are only used for reference.

2. When conducting the test for PBBs&PBDEs, XRF was introduced to screen Br Exclusively; When conducting the test for Hexavalent Chromium, XRF was introduced to screen Chromium exclusively.

3. According to the client's statement , the material of the sample(s) comply with RoHS directive 2011/65/EU Annex III Exemption, Corresponding exemption clause:

#1 6(c) Lead is exempted as copper alloy containing up to 4% lead by weight .

#2 7(c)-I Lead is exempted as Electrical and electronic components containing lead in a glass or ceramic other than dielectric ceramic in capacitors, e.g. piezoelectronic devices, or in a glass or ceramic matrix compound.

4. Part No.280,300 Resubmitted Date: 2021-04-09



**Test Method:**

when screening results exceed the XRF screening limit in IEC62321-3-1: 2013, further use of chemical methods are required to test the Lead(Pb), Cadmium(Cd), Mercury(Hg), Hexavalent Chromium(Cr(VI)), Polybrominated Biphenyls(PBBs) and Polybrominated Diphenyl Ethers(PBDEs)

## 1. XRF screening limits in mg/kg for regulated elements according to IEC 62321-3-1:2013

Element	Limit of IEC 62321-3-1:2013 (mg/kg)		
	Polymers	Metals	Composite material
Pb	BL≤(700-3σ) <X <(1300+3σ)≤OL	BL≤(700-3σ) <X <(1300+3σ)≤OL	BL≤(500-3σ)<X <(1500+3σ)≤OL
Cd	BL≤(70-3σ)<X < (130+3σ) ≤OL	BL≤(70-3σ)<X < (130+3σ) ≤OL	LOD <X<(150+3σ) ≤OL
Hg	BL≤(700-3σ)<X <(1300+3σ)≤OL	BL≤(700-3σ)<X <(1300+3σ)≤OL	BL≤(500-3σ)<X <(1500+3σ)≤OL
Cr	BL≤(700-3σ)< X	BL≤(700-3σ)< X	BL≤(500-3σ)< X
Br	BL≤(300-3σ)< X	/	BL≤(250-3σ)< X

Note: BL=Under the XRF screening limit OL=Over the XRF screening limit  
 X=The symbol "X" marks the region where further investigation is necessary.  
 3σ =The reproducibility of analytical instruments LOD= Detection limit

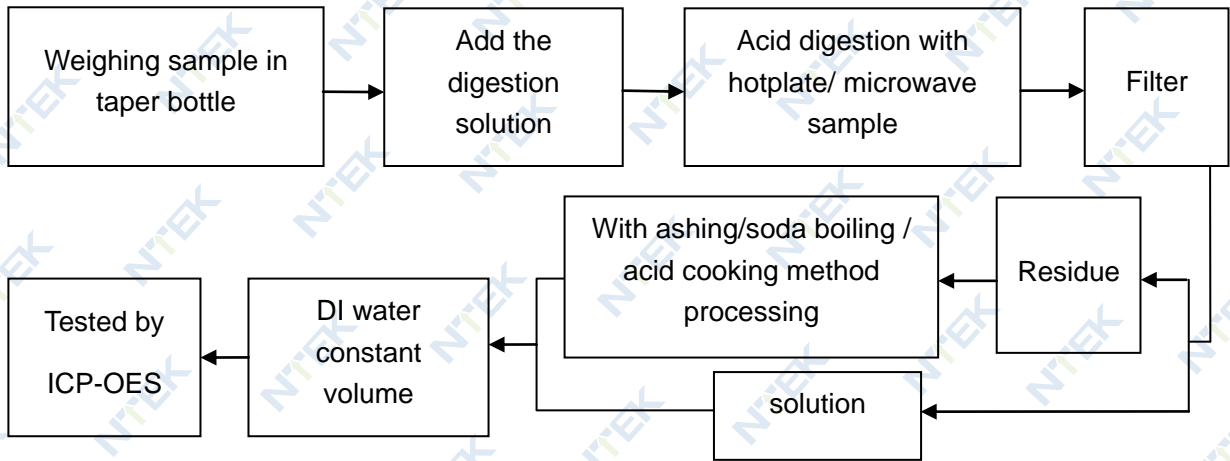
## 2. Chemical Test

Test item	Test method	Test instrument	MDL	Limit
Lead (Pb)	IEC 62321-5:2013 Ed.1.0	ICP-OES	10 mg/kg	1000 mg/kg
Cadmium (Cd)	IEC 62321-5:2013 Ed.1.0	ICP-OES	10 mg/kg	100 mg/kg
Mercury (Hg)	IEC 62321-4:2013+AMD1:2017	ICP-OES	10 mg/kg	1000 mg/kg
Hexavalent Chromium(Cr(VI))	IEC62321-7-1:2015 Ed.1.0	UV-Vis	0.10 μg/cm <sup>2</sup>	1000 mg/kg
	IEC 62321-7-2:2017 Ed.1.0		10 mg/kg	
Polybrominated Biphenyls(PBBs)	IEC 62321-6:2015 Ed.1.0	GC-MS	100 mg/kg	1000 mg/kg
Polybrominated, Diphenyl Ethers(PBDEs)	IEC 62321-6:2015 Ed.1.0	GC-MS	100 mg/kg	1000 mg/kg
Bis-(2-ethylhexyl) Phthalate (DEHP)	IEC 62321-8:2017 Ed.1.0	GC-MS	50 mg/kg	1000 mg/kg
Benzyl butyl Phthalate (BBP)	IEC 62321-8:2017 Ed.1.0	GC-MS	50 mg/kg	1000 mg/kg
Dibutyl Phthalate (DBP)	IEC 62321-8:2017 Ed.1.0	GC-MS	50 mg/kg	1000 mg/kg
Diisobutyl Phthalate(DIBP)	IEC 62321-8:2017 Ed.1.0	GC-MS	50 mg/kg	1000 mg/kg



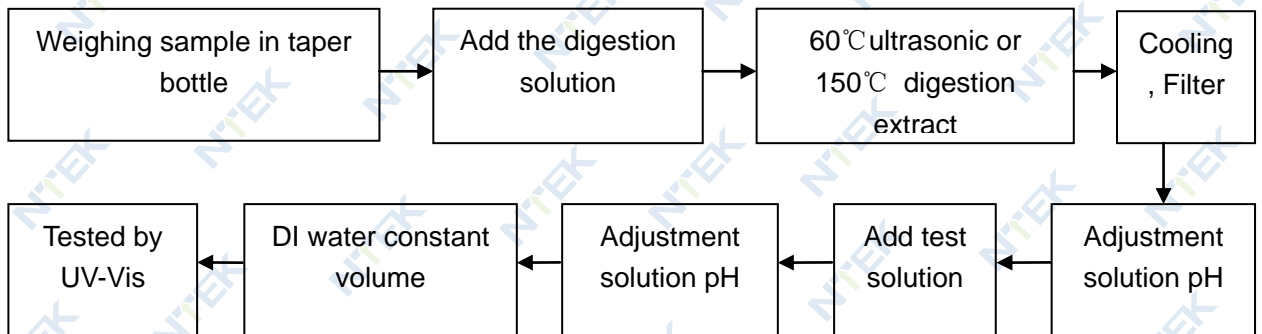
**Test Flow:**

1. Lead(Pb), Cadmium(Cd) , Mercury (Hg)

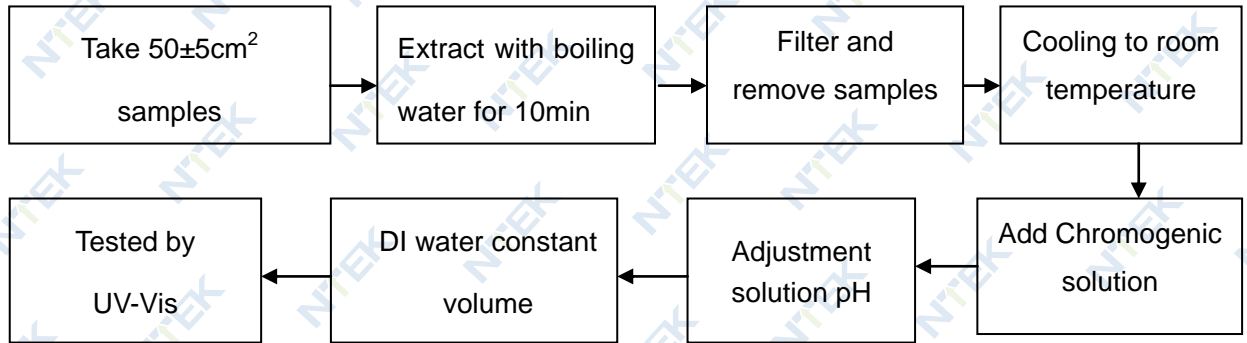


2. Hexavalent Chromium(Cr(VI))

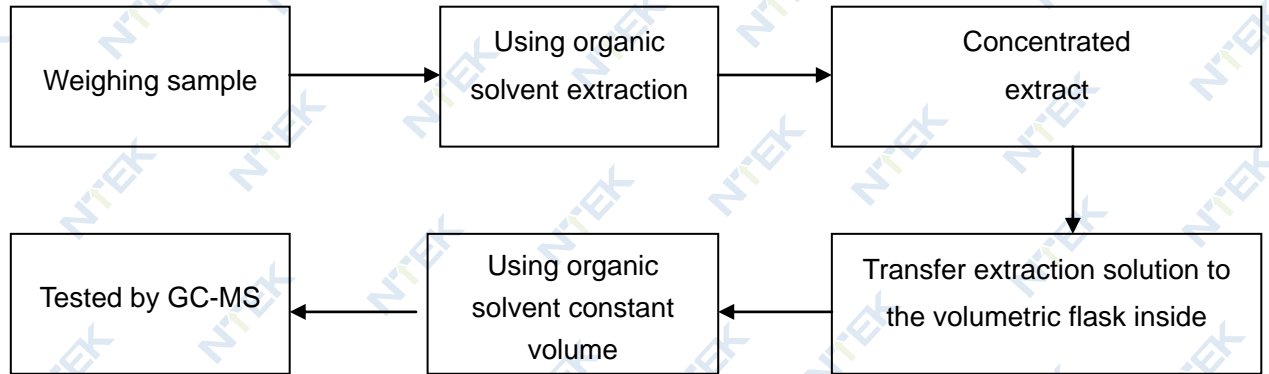
2.1 Non- metal sample(s)



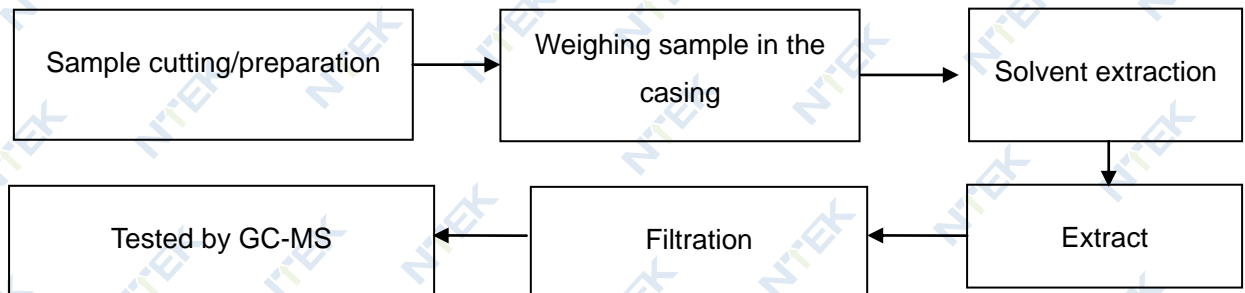
2.2 Metal sample(s)



3. PBBs/ PBDEs



4. Phthalates



**Sample photo(s):**



Fig.1



Fig.2



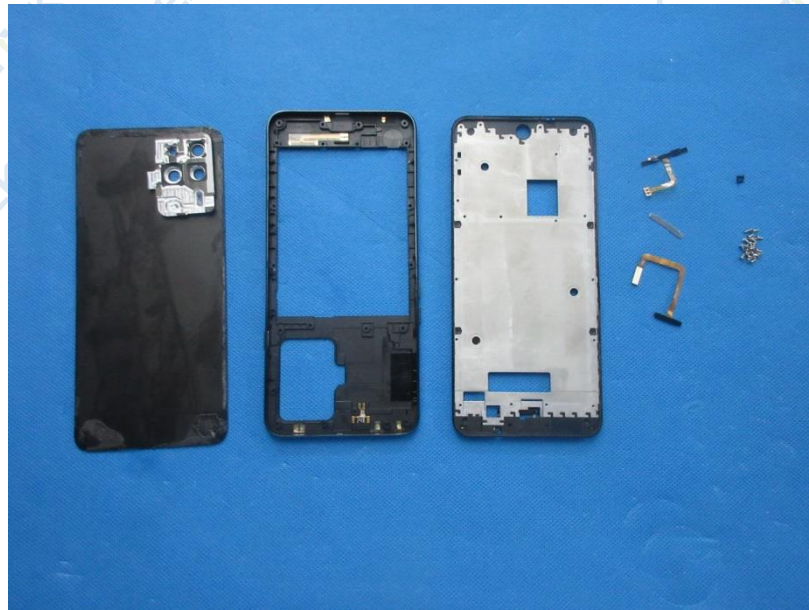


Fig.3



Fig.4



Fig.5

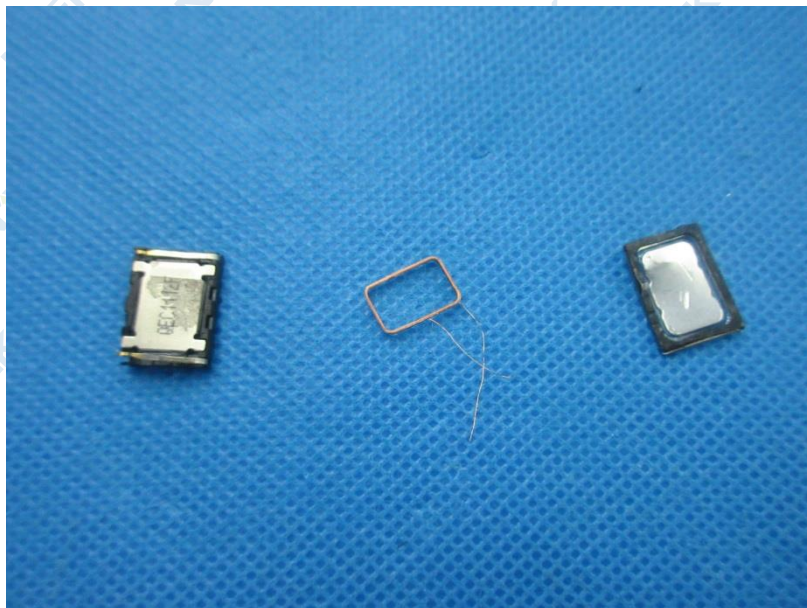


Fig.6



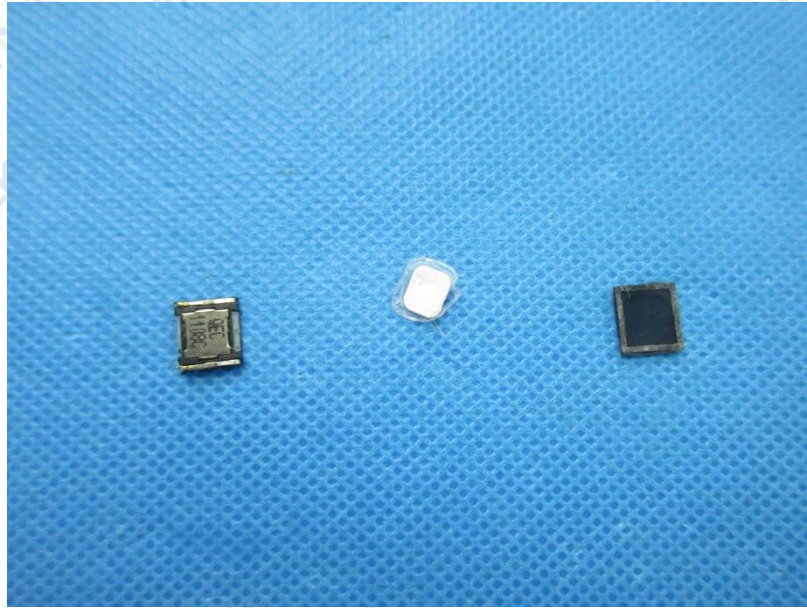


Fig.7

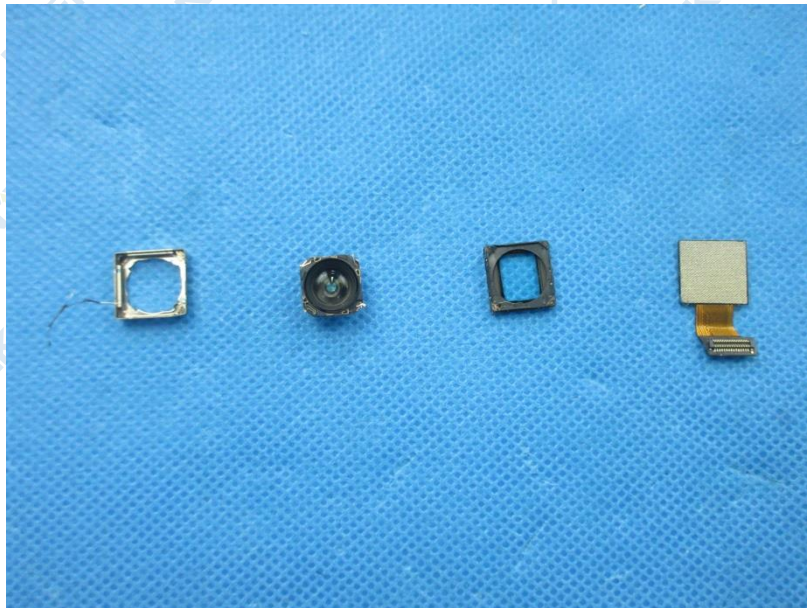


Fig.8

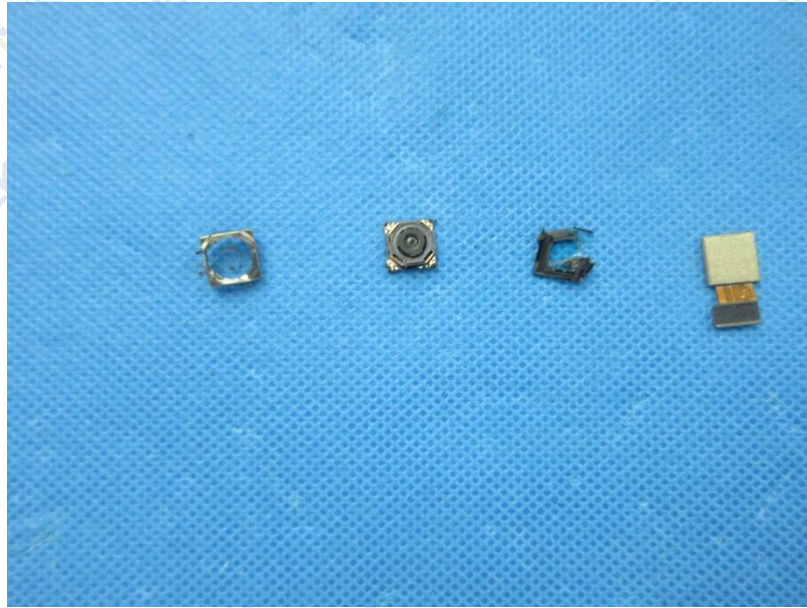


Fig.9

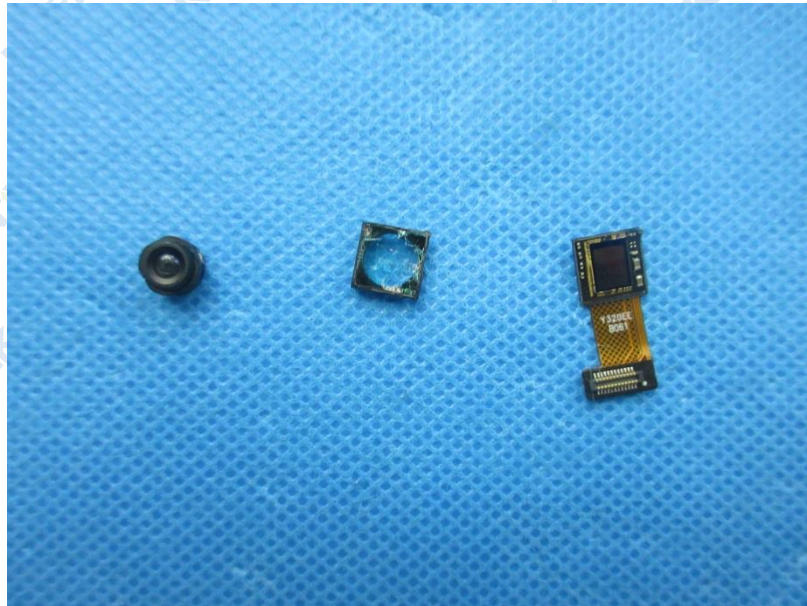


Fig.10



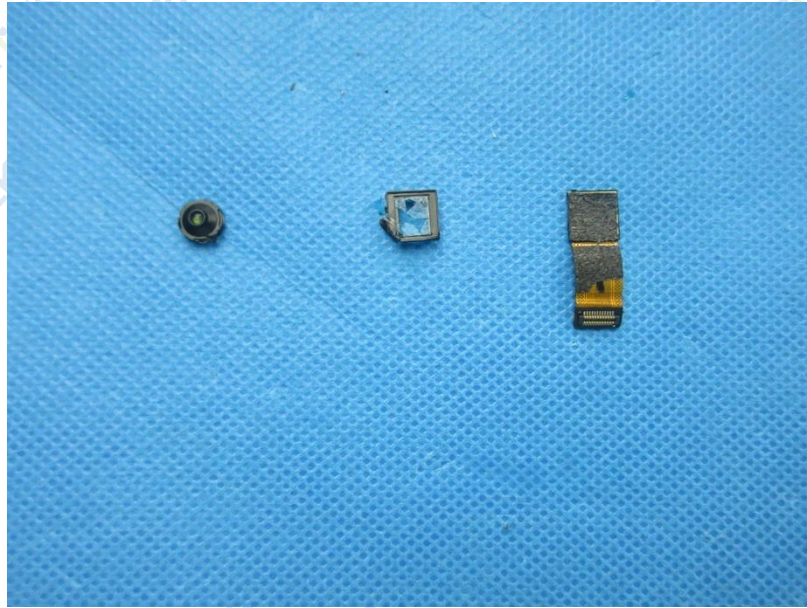


Fig.11

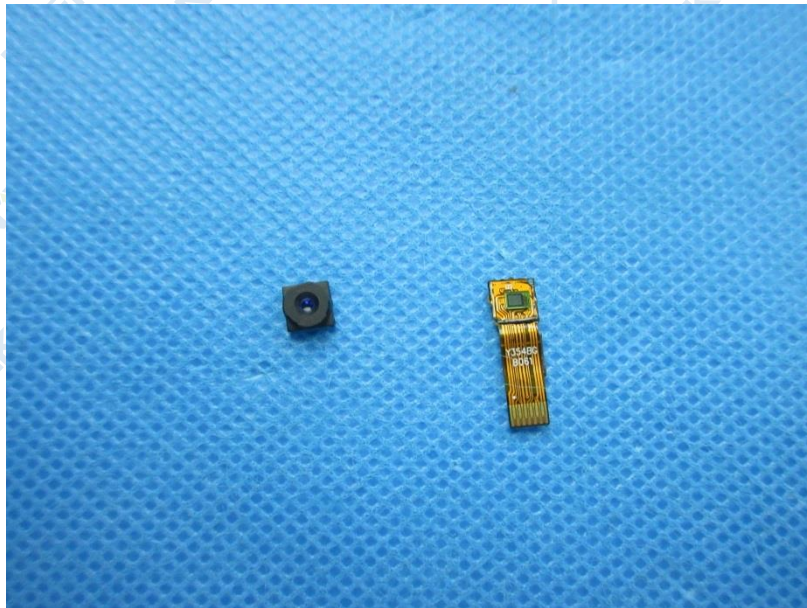


Fig.12

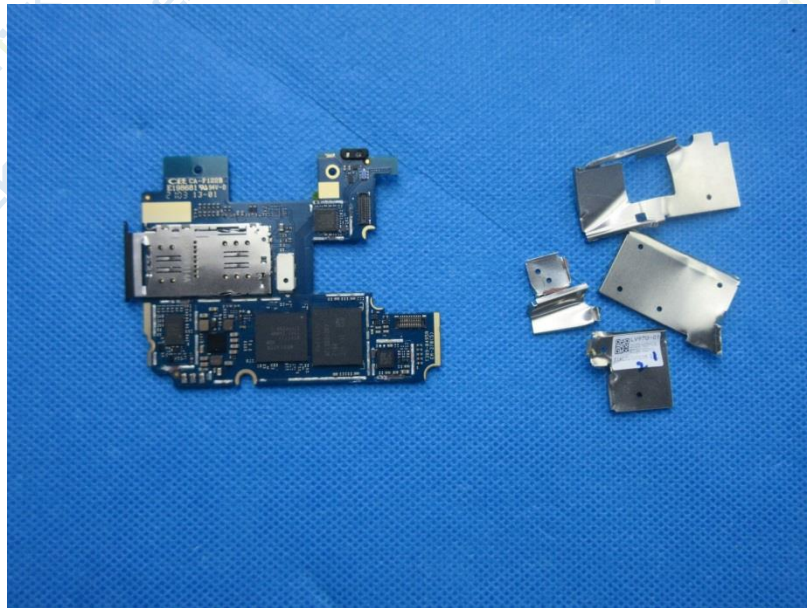


Fig.13

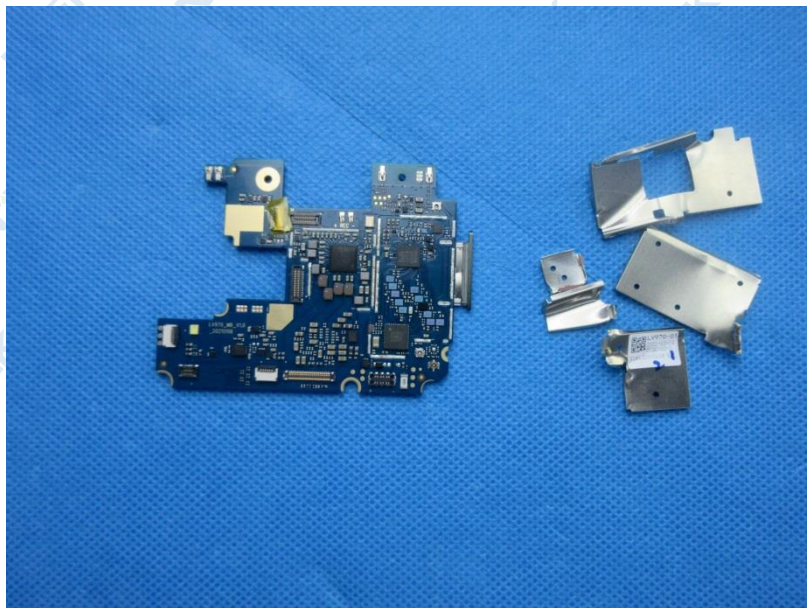


Fig.14



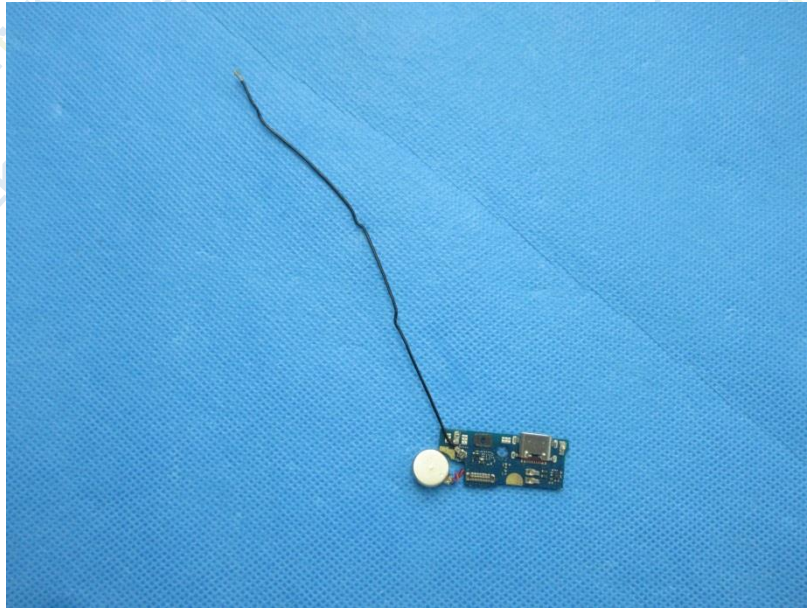


Fig.15

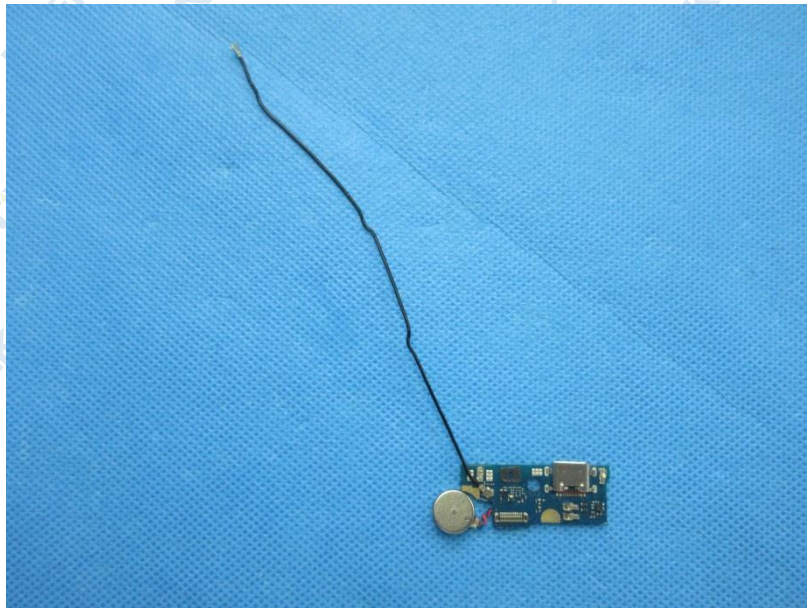


Fig.16



Fig.17

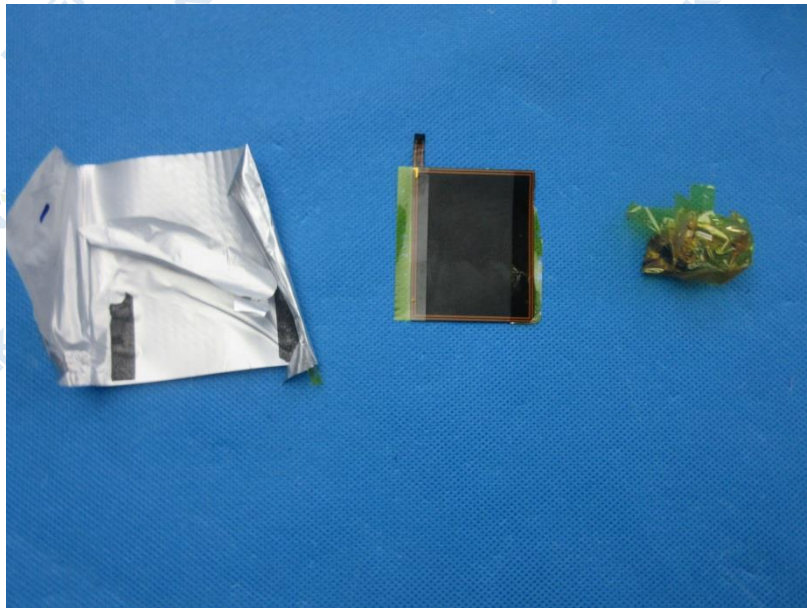


Fig.18





Fig.19

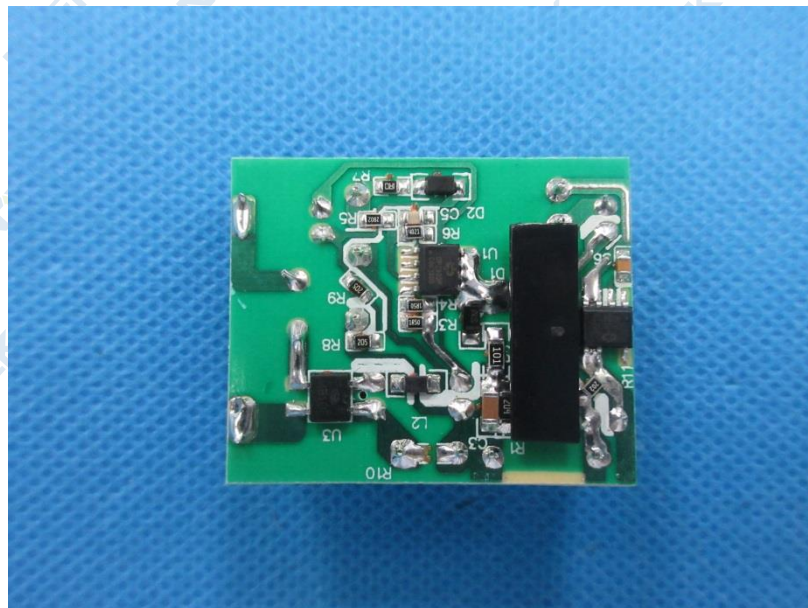


Fig.20

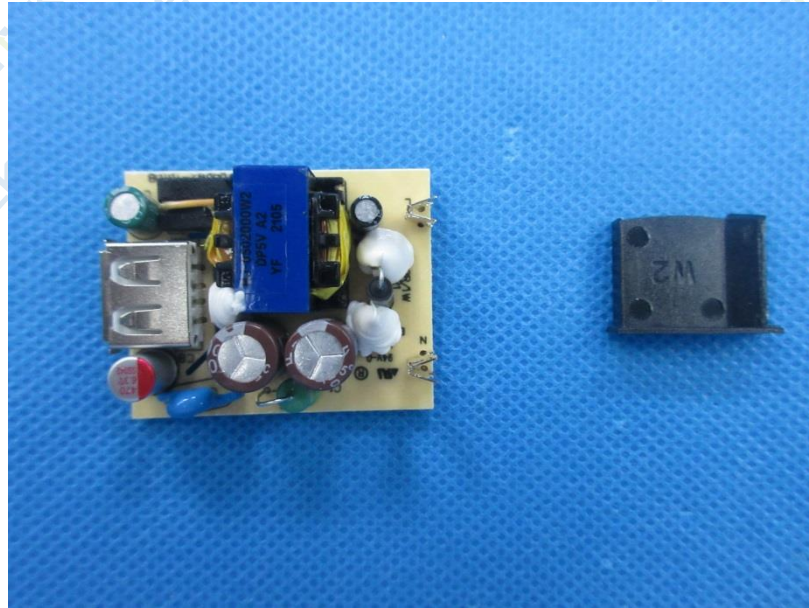


Fig.21



Fig.22





Fig.23



Fig.24



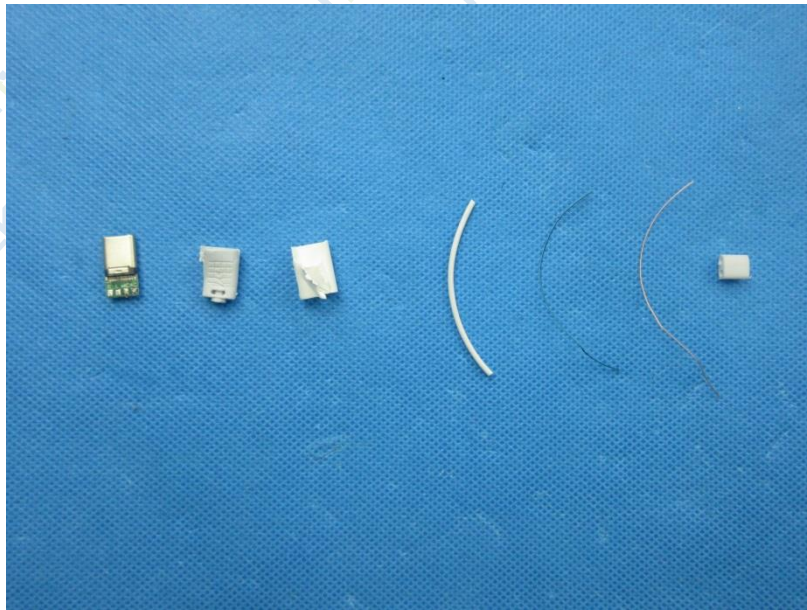


Fig.25

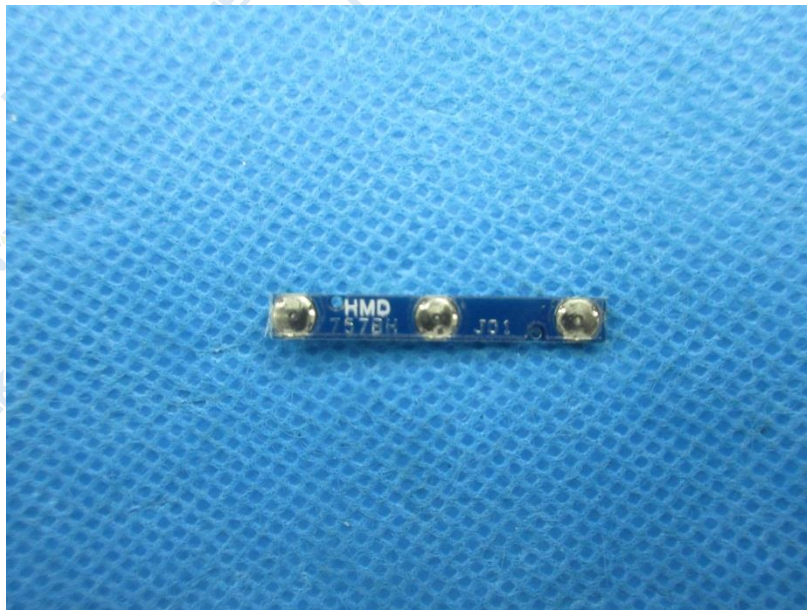


Fig.26



Fig.27

\*\*\*\*End of Report\*\*\*\*

The test report is effective only with both signature and specialized stamp, the result(s) shown in this report refer only to the sample(s) tested. Without written approval of NTEK, this report can't be reproduced except in full.